

Auburn University® Panhellenic

Recruitment Handbook

2022



GREEK LIFE

stay connected with us



aub.ie/aupan



Auburn Panhellenic



AU_Panhellenic



Auburn Panhellenic



AubPanhellenic

contents

ABOUT PANHELLENIC

- 6 A Letter from the VP for Recruitment
- 7 Code of Ethics
- 8 Greek Glossary
- 11 Greek Life Office
- 12 Greek Life 101
- 14 Panhellenic Council
- 15 Panhellenic Philanthropy
- 16 The EAGLES Program
- 17 Pi Chis
- 18 Executive Board
- 19 Recruitment Executive Board

WHY SHOULD I JOIN A SORORITY?

- 22 Why Should I Join?
- 23 Life as a First-Year Member
- 24 Testimonies from Current Members

RECRUITMENT 101

- 28 What to Bring
- 29 Recruitment Rules
- 30 Virtual Ice Water Teas
- 32 Philanthropy
- 34 Sisterhood
- 36 Preference
- 38 Bid Day
- 40 Continuous Open Bidding

MORE INFORMATION

- 44 Frequently Asked Questions
- 45 A Healthy Recruitment
- 46 Bill of Rights
- 47 Finances
- 48 Our Chapters
- 52 Notes
- 55 Advertisements
- 66 Parking



“Auburn Panhellenic is the community that has given me my greatest friends and greatest memories! Not only have I had the opportunity to grow close with many sisters in my chapter, I have gotten to know countless Panhellenic women whose kindness have made my time at Auburn sweeter. No matter what chapter, I know that my friends in Panhellenic will always support and encourage me because of their strong values and unwavering friendship.”

- Merdith Forrester
Member of Alpha Omicron Pi

Dear Potential New Members,

War Eagle and Welcome to the Plains! This handbook has all of the information you will need about the Auburn Panhellenic recruitment process, as well as more information on the chapters in our community.

Our primary recruitment experience has been intentionally planned to empower you with knowledge about the Panhellenic community, and to allow you the opportunity to form new and meaningful relationships. My desire is that whether you choose to join a Panhellenic sorority at the end of the week, or choose to only spend recruitment with us, you find a place to call home at Auburn.

Over the course of the week, you may see yourself in one chapter or another; you may think you already know where you want to run home to on Bid Day. I want to extend a challenge to you: Envision the person you want to be as you leave the Plains in a few short years, and make the decisions that will help you become that person. Focus on your identity and values, and allow yourself to truly explore each chapter. You have the opportunity to not only join an incredible chapter, but to join the Panhellenic community as a whole, which is full of women who are so excited to welcome you. Each of our chapters are unique, but all are founded upon the same values of academic excellence, social responsibility, leadership, and service to our campus and community.

Remember that you have your Pi Chi, all of the other Pi Chis, and the Recruitment Executive Board as resources to confide in throughout the week. Do not be afraid to stop us and ask any questions you have, or if you simply want to share how your week is going. We are here to listen, serve you, and make sure that you have the best recruitment experience possible!

Take time to enjoy this week; breathe, and allow yourself to be surrounded with women who challenge you, empower you, and inspire you for the better. I wish you the best of luck as you begin your journey into Greek life at Auburn. I hope that you will make the most of this week and cherish all of the friendships that are formed. We are so glad you are here, and we look forward to meeting you soon!

War Eagle,

Sydney Bowdoin

Panhellenic Vice President for Recruitment

code of ethics

We, the undergraduate members of women's fraternities at Auburn University agree to promote honesty, respect, and sisterhood through adherence to the unanimous agreements and all amendments established by the National Panhellenic Conference. Recognizing that we represent the Greek community, we strive through thought, word, and action, to uphold the traditions, fine standards, and values long held by Auburn women. As members of the Panhellenic Council, we stand for academic excellence, social responsibility,

leadership, and service to our college campus and community. In accordance with the dignity and character of fraternity women, we pledge to treat all collegians, both Greek and non-Greek, with the utmost respect and honor. We believe that the highest level of trust should exist between individual chapters and their members, fostering a spirit of friendship and harmony. These are the ideals, which will establish a legacy for future generations of Auburn women.

Auburn Panhellenic is the best community of girls. I have found my lifelong friends, grown as an individual and made the best memories. I love every part of being a member of my chapter but also the community as a whole!

- Emily Jolley
Director of Recruitment Operations





VOCABULARY

ACTIVE A sorority member who has been formally initiated by her chapter into a lifelong membership.

ALUMNA A sorority woman who has completed her undergraduate sorority membership. Usually, it is someone who has graduated.

BID A formal invitation to pledge a sorority.

CONTINUOUS OPEN BIDDING
The period in which any group with invitations to extend may pledge a woman without scheduled parties or bidding.

INITIATION The formal ceremony that brings new members into full membership of the sorority.

INTENTIONAL SINGLE PREFERENCE When a potential member attends the preference parties of more sororities than she lists on her preference card.

LEGACY A woman whose mother, sister or grandmother is an alumna or collegiate member of a national sorority. It is important to do your own research on legacy information for each chapter. A lot of legacy information has changed.

NATIONAL PANHELLENIC CONFERENCE (NPC) Made up of 26 women’s-only inter/national member organizations, the National Panhellenic Conference is the world’s largest umbrella organization specifically charged with advancing the sorority experience.

PANHELLENIC COUNCIL
The unifying, coordinating, and overseeing body of all eighteen National Panhellenic Conference (NPC) sororities on Auburn’s campus.

POTENTIAL NEW MEMBER (PNM)
A collegiate who is participating in formal or informal recruitment.

RECOMMENDATION A letter or statement recommending a woman for membership. It can be sent to the Auburn undergraduate chapter the author is affiliated with. It is the sorority’s responsibility to obtain recommendations.

SORORITY NAMES & LETTERS

Alpha Chi Omega	ΑΧΩ	Gamma Phi Beta	ΓΦΒ
Alpha Delta Pi	ΑΔΠ	Kappa Alpha Theta	ΚΑΘ
Alpha Gamma Delta	ΑΓΔ	Kappa Delta	ΚΔ
Alpha Omicron Pi	ΑΟΠ	Kappa Kappa Gamma	ΚΚΓ
Alpha Xi Delta	ΑΞΔ	Phi Mu	ΦΜ
Chi Omega	ΧΩ	Pi Beta Phi	ΠΒΦ
Delta Delta Delta	ΔΔΔ	Sigma Kappa	ΣΚ
Delta Gamma	ΔΓ	Sigma Sigma Sigma	ΣΣΣ
Delta Zeta	ΔΖ	Zeta Tau Alpha	ΖΤΑ

GREEK ALPHABET

Α alpha	Β beta	Γ gamma	Δ delta	Ε epsilon	Ζ zeta
Η eta	Θ theta	Ι iota	Κ kappa	Λ lambda	Μ mu
Ν nu	Ξ xi	Ο omicron	Π pi	Ρ rho	Σ sigma
Τ tau	Υ upsilon	Φ phi	Χ chi	Ψ psi	Ω omega



greek life office

Potential Members,

Congratulations on your admission to Auburn University, and thanks for your interest in our community! The 18 Panhellenic sororities offer so much to their members by way of fun, friendship, and memories. The activities our sororities participate in help their members develop skills and abilities that will last a lifetime, while contributing to our campus and community. Sorority members at Auburn who truly become involved with their chapters and on campus are taught valuable leadership skills that can benefit them throughout life.

Each of our sororities is special and equally wonderful. The best advice we can give you is to use this time to investigate all of the unique aspects of each group. If you truly want to be a sorority member, you can find something excellent about each group at Auburn. This week, you should carefully think about each sorority and what it can offer you, as well as what you can bring to it. Hopefully, this week you will find your new home away from home. However, one thing that makes Auburn so great is that being a sorority member is not a prerequisite for involvement. So, if you decide that sorority membership is not for you, there are still many ways to get involved and make friends on campus. Remember that whether you join or not, you're in for a great time here on the Plains.

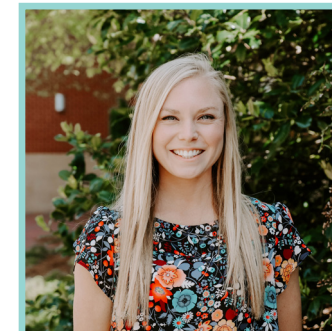
During and after recruitment, the Greek Life Staff, Panhellenic Officers and your Pi Chi are here to help you, whether you join or not. Look for us in our recruitment shirts and name tags this week, and please let us know if we can assist you in any way. We wish you the best of luck as you begin your journey into sorority life.

WAR EAGLE!

Lindsay & Kazmine

CONTACT

334-844-4600
 greek@auburn.edu
 255 Heisman Drive,
 Suite 1330
 Auburn, AL 36849



Lindsay Holdren,
 Director of Greek Life



Kazmine Longmire
 Greek Life Graduate Assistant

greek 101

Auburn University Greek Life is a vibrant part of the Auburn student experience. With 50 organizations across three governing councils, more than 8,400 Auburn students call one of our fraternities or sororities home. Auburn fraternities and sororities offer students a wide variety of experiences, including service projects, philanthropic efforts, leadership development and social engagement. Membership provides students with connections to alumni from across the nation and in every professional industry and area.

All fraternities and sororities were founded on core values and beliefs that are centered on improving the lives of their members while the members improve the campus and community. By joining a fraternity or sorority, the membership is making a commitment to uphold the standards of the organization and the institution. Membership in a fraternity or sorority is open to regularly enrolled undergraduate students and is selected by the current membership within the organization.



CONTACT
greeklife.auburn.edu
 (334) 844-4600

FAST FACTS
8,400+ students involved in Greek organizations
 Auburn's Greek community is home to **50** active fraternities and sororities ranging from **4 - 340** members.
3.31 all Greek GPA in fall 2021, which is above the all-undergraduate GPA



@auburnifc

There are 27 fraternity chapters affiliated with the Auburn Interfraternity Council (IFC), which serves as the governing body for national and international men's fraternities, many of which are affiliated with the North-American Interfraternity Conference (NIC). These 25 chapters host recruitment activities throughout the fall and spring and have a formal recruitment week at the beginning of each semester.



@aunphc

The six fraternities and sororities of the Auburn National Pan-Hellenic Council (NPHC) are affiliated with the National Pan-Hellenic Council, which consists of nine fraternities and sororities known as the Divine Nine. These organizations are historically African American fraternities and sororities who participate in a deferred membership selection process known as Intake. For an aspirant to participate in a chapter's Membership Intake Process (MIP) the aspirant must have completed at least 12 Auburn credit hours and have attended Auburn NPHC's Meet the Greeks during the academic year of Intake participation.



@au_panhellenic

The 18 sorority chapters affiliated with the Auburn Panhellenic Council select membership through a mutual selection process which primarily takes place before the start of the fall term, with some opportunities available throughout the year. These 18 chapters are affiliated with the National Panhellenic Conference (NPC), which is the umbrella organization for 26 national and international sororities and women's fraternities across North America.

panhellenic council

The Panhellenic Council at Auburn University is the unifying, coordinating, and overseeing body of all 18 National Panhellenic Conference (NPC) sororities on Auburn's campus. It became an official Panhellenic association in September of 1929 and has received numerous National Panhellenic Conference awards over the years such as Excellence in Academics, Leadership, Publications, Community Service, and Recruitment. All sorority members are automatically part of the Panhellenic Association; however, the Panhellenic Council is composed of women from each sorority who successfully run the Panhellenic community. Specifically, six elected executive officers, each chapter's President, Delegate and a Junior Panhellenic Delegate. It is also composed of appointed cabinet members, committees, and advisors.

The Panhellenic Council is an integral part of Auburn's Greek community and provides an outlet for numerous involvement opportunities. It's main objective is to enhance the college experience of its members through fostering friendships, leadership opportunities, and personal growth. The Council is also responsible for promoting scholarship, philanthropy, and the safety and well-being of each chapter and its members, as well as the Greek community as a whole. In addition, the Panhellenic Council works alongside IFC and NPHC to sponsor service activities and leadership growth programming. Finally, the Panhellenic Council oversees recruitment to make it a fun, memorable, and fair experience for all who participate.

Auburn Panhellenic Council's primary recruitment is open to all enrolled Auburn University students who identify as women regardless of race, religion, color, age, national origin, disability or veteran status. We are happy that you are interested in joining us as we celebrate our 93rd year on Auburn's campus.



panhellenic philanthropy

GREEK SING

The Auburn Panhellenic Council has worked with Lee County's chapter of Habitat for Humanity for over 26 years. The Panhellenic community also participates in Habitat build days that give women hands-on experience through building a house for those in need. The community volunteers over 280 hours every year on a job site of a house we help fund. Our annual Greek Sing event, an entertaining dance competition among the sororities, has been how we raise money for this cause. Over the years, we have given an estimated number of over \$900,000 in donations to Habitat for Humanity. Our 2022 Greek Sing event alone raised a donation of \$142,105.00. Our previous Director of Greek Sing states, "You are not [always] able to see a tangible outcome of donating to an organization, but through Greek Sing, we are able to do just that."



BENEVOLENCE DRIVES

The Auburn Panhellenic Council is committed to bettering Auburn and the local Alabama community through monthly benevolence drives. Last year, we were able to give over 30,000 items to local organizations. Each month, Panhellenic Council's Director of Benevolence researches and organizes donation opportunities within the eastern Alabama community and relays the information to our chapters. Our chapters are provided Panhellenic point opportunities as an incentive to participate and assist in donation efforts. A few of the recent organizations our community has donated to include, Piedmont Columbus Regional Children's Hospital, Campus Food Pantry, United Way of Lee County, and Our House Auburn. We are so thankful for the opportunity to reach the community beyond Auburn University.

"Each month, over 4,000 women of the Panhellenic Council come together as a family to reach beyond Auburn University and give back to the community that has given us so much. These women have a heart for serving those around them, and that has been so evident to me this year as Panhellenic Council has raised several thousands of items for organizations in the Auburn-Opelika area. While we may all have different Greek letters, we are all on one team, Auburn Panhellenic, that loves to help in whatever way we can!"

- Caitlyn Wanalista
Director of Benevolence

the EAGLES program

The iconic eagle represents the Auburn spirit and the strength that is within all of us. It is therefore fitting that Auburn University's comprehensive transition program for students with an intellectual disability is known as the EAGLES, or Education to Accomplish Growth in Life Experiences for Success, Program. This program focuses on increasing students' independence, improving leadership and advocacy skills and preparing for employment while providing life skills, academic enrichment, a health and wellness component, and campus navigation

supports. The Panhellenic Council and the EAGLES program office have worked together to create a recruitment experience for the female participants in the EAGLES program. This partnership provides certain accommodations to Panhellenic policies and procedures to provide a quality and genuine experience for EAGLES participants. Other than these accommodations (e.g, a reduced schedule) the EAGLES women will fully participate in recruitment and if they choose to join a Panhellenic sorority they will have the full benefits of membership.



I am unbelievably honored to be serving as the Director of EAGLES Initiatives this year. The EAGLES Program and this role have provided me countless opportunities, the honor to work alongside people I admire, and most importantly friendships that I will treasure for the rest of my life. As we often say in the program, War EAGLES!"
 - Emory Alexander
 Director of Eagles Initiatives

pi chis

Recruitment can be an exciting, hectic, and often an emotional time. You will be part of a group of about 15-18 potential members sharing a Pi Chi who will help you through the entire process and after. The term Pi Chi stands for Panhellenic Counselor. She is prepared to help you and can answer any questions you may have about recruitment. Your Pi Chi participated in recruitment as a potential member and as a sorority member, so she is familiar with both sides of the recruitment process.

The Pi Chis are working for the Panhellenic Council, and each has promised not to reveal her sorority affiliation. Therefore, she can give you unbiased advice and reduce any

pressure you may feel. Although it is sometimes tempting to know what sorority she belongs to, please do not ask her to tell you or make any efforts to find out. She will reveal her sorority to you before bids are distributed.

Your Pi Chi is a resource for you. More importantly, though, she is an impartial listener. She will be your friend who will share in your joys as well as your anxieties. While you will have a special relationship with your own Pi Chi, all Pi Chis are there to help all potential members, so you should feel comfortable approaching any Pi Chi for anything you might need. They will be prepared to help you with anything! Your Pi Chi and your recruitment group will help make your recruitment experience even more exciting and enjoyable.



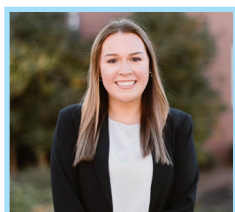
Meet the Women in Charge!



(L-R) Katie Messikomer, Sydney Blaxton, Morgan Linneen

executive board

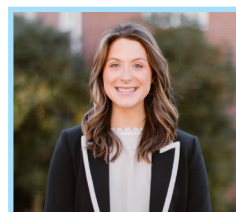
The Panhellenic Executive Board is responsible for overseeing and coordinating all facets of the Panhellenic Council. Programming, finances, chapter relations and outreach all fall under their leadership, as does recruitment. These six women have been planning for recruitment, establishing plans and guidelines, refining details, and preparing our chapters to welcome you to our community. They are disaffiliated from their sororities for recruitment in an effort to provide you with the best support possible. The Panhellenic Executive Board will be running recruitment from behind-the-scenes, and ensuring your experience is reflective of all that Auburn Panhellenic stands for.



Caroline Green
President



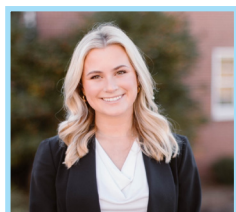
Maggie McDuffa
Administrative
Vice President



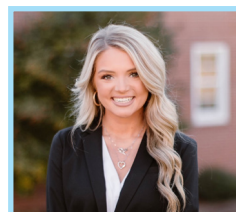
Madeline Lewis
Executive
Vice President



Sydney Bowdoin
Vice President for
Recruitment



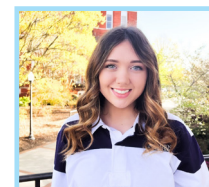
Riley McIntrye
Vice President
for Finance



Braxton Belle Rich
Vice President
for Public Relations

recruitment executive board

Along with the Panhellenic executive officers, the Recruitment Executive Board has been working hard to prepare for this year's recruitment. They have disaffiliated from their sororities until bids are distributed. Throughout the week, they will be working hard to make things run smoothly and will be available to answer your questions if you are unable to find your Pi Chi. There are 9 women on Panhellenic Cabinet who, along with the 6 members of the Panhellenic executive board, serve on the Recruitment Executive Board. The members of the Recruitment Executive Board include:



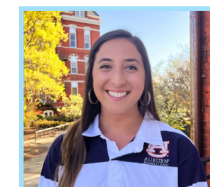
Sydney Blaxton
Head Pi Chi



Morgan Linneen
Assistant Head Pi Chi



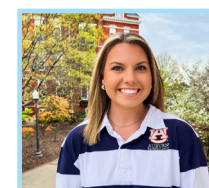
Katie Messikomer
Assistant Pi Chi



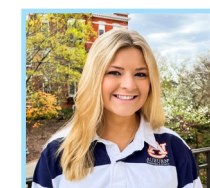
Emily Jolley
Director of
Recruitment
Operations



Anna Kate Taylor
Head Computer
Analyst



Caroline Romeo
Assistant Computer
Analyst



Laurie Wakefield
Director of
Recruitment Media



Sarah Cahill
Director of Continuous
Open Bidding



Emory Alexander
Director of Eagles
Initiatives



“Panhellenic to me means changing lives for the community. Panhellenic women encourage other women to be strong and confident so that they can do ANYTHING. Panhellenic really shapes young women to be leaders and role models.”

- Anastasia O'Neill
Member of Alpha Xi Delta

why should i join a sorority?

ACADEMICS

We realize you are at Auburn to learn, which is why all of our Panhellenic sororities place a high emphasis on academics. Our grade point average is consistently higher than the average Auburn undergraduate women's GPA.

NETWORKING

Joining a sorority means having the chance to network with fellow sorority members, as well as alumnae. Our members have the support and mentorship for possible job opportunities right after college and beyond.

INVOLVEMENT

All of our sororities encourage their members to get involved in activities they are passionate about, which is why you will see many of our Panhellenic members as leaders in other organizations.

PHILANTHROPY

We have dedicated over 120,000 hours to community service annually as well as donated over \$900,000 to a variety of philanthropies.

SISTERHOOD

Sisterhood is the ability to build community. The bonds that are formed are meant to last a lifetime. Our sisterhood becomes "home" for many members while they are in college.

life as a first-year member

The new member period will be one of orientation into sorority life. During the semester the new member may receive a "big sister" to help with anything she may need. She will be expected to attend weekly new member meetings. Other fun events such as socials, pep rallies, and formals will become a part of her life.

Before a new member can be initiated, she must fulfill the sorority's new member requirements, such as learning the sorority's history, purposes and goals, and in some cases, obtaining a specific GPA.

A new member is expected to contribute her time and talents to making her chapter a success. She will represent her sorority to other people and is expected to maintain its high standards.



testimonies

These are quotes from current members within different sororities that make up the Panhellenic community that speak of their individual experiences.

“While going through recruitment, my goal was to find a sisterhood where I would be constantly uplifted and find my forever friends. When I joined my chapter here at Auburn, I instantly felt the love and support of all of my sisters, much like I have at home with my three biological sisters. I am so thankful for friendships that have poured into me and made me the woman that I am today!”

“As a Panhellenic woman, I have been gifted with the most incredible relationships, growth opportunities, and experiences anyone could ask for. I would not trade my Panhellenic experience for the world, and am always comforted knowing that this community is there to cheer each other on.”

“My personal experience within my chapter has been such a rewarding experience. I have met the most lovable and genuine girls. I have been given so many wonderful opportunities within my chapter, and I am forever grateful to be part of such an amazing sisterhood!”

“Getting involved on campus—through my chapter, SGA, and Panhellenic Cabinet—is the best advice I could give anyone going into college! Recruitment can be taxing, but it’s important to keep in mind what will come at the end of the week. It has given me the most supportive network of people, not to mention a heart tuned to service!”

“Joining my sorority has been one of the greatest experiences of my life. Not only has it opened so many doors and opportunities for me, but it has also allowed me to meet some of the greatest girls on the planet. I have been able to find passions and talents that I never would’ve known I had without the love and support of my chapter. I am forever thankful to be a Panhellenic woman!”

“Being a part of such a lovable group of women has been such an honor, I love meeting new people within my chapter and making new memories.”

“Panhellenic has given me friendships that last forever and memories I will never forget! I am forever thankful for every special memory I have received through not only my chapter, but Panhellenic as a whole!”

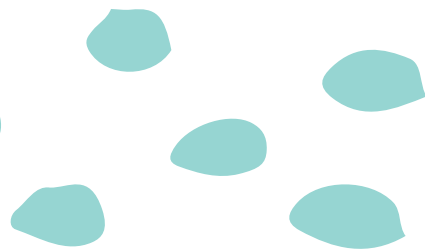
“I can’t describe the blessing my chapter has been in my life! The process can be hard and exhausting, but keep a good attitude and trust the plan. You will not regret investing in the people around you!”

“My experience within my chapter in Auburn Panhellenic has gone above and beyond my expectations. I am forever grateful to have found my home away from home and feel so much love, joy, and support from a strong group of women! I will be forever thankful for the friendships and experiences made in the Panhellenic community!”

“Coming to Auburn, the best decision I made was to join a sorority. I had no idea the impact it would have on me over the past three years. In 2019, my mom passed away and the love and support my sisters showed me was beyond anything I could’ve asked for. They are there for you in the good and bad times, and are truly my second family. I’m so thankful for them, their support, and the relationships I’ve built because of my sorority!”

“Being in a sorority has been the biggest blessing to me! I’ve found lifelong friends that continue to support me and push me to be the best version of myself! I cannot thank these women enough for the constant support and opportunities!”

“Coming to Auburn I did not know a soul, but going through recruitment gave me a community of strong women to call sisters. It was truly the best decision of my life and I am forever grateful for Auburn Panhellenic!”



“My favorite memory was getting to know my hall mates throughout recruitment! I lived in Owen which was an all-girls dorm, and I met so many of my friends during recruitment week. They were always there for me no matter what, and I could always count on their support. My best advice is to leave your dorm door open during this week, and get to know as many girls on your hall —because who knows, maybe one of them will become your sister!”

- Crikey Bryan
Member of Delta Gamma

what to bring

- A bag or tote to carry all of your things. Not to worry, the Pi Chis will watch your belongings while you are at parties.
- Pens or pencils, bandages for blisters, mints, extra lip balm, powder and anything you would need to freshen up between parties.
- Snacks such as trail mix, fruit or crackers and water. Panhellenic will also have water available.
- A small amount of cash or your Tiger Card on hand for each day. There will be food available at campus eateries during your breaks, or you may choose to grab something off campus.
- An umbrella or rain jacket (rainstorms are inevitable in Alabama, especially in August!) and comfortable shoes to change into if you decide to wear heels during parties.

general tips

1. Be yourself and have fun!
2. Be positive and smile. Your positivity will radiate to those around you while you are waiting to enter each party.
3. Be interested, regardless of whether you like the sorority or not. You will be remembered, and you may decide you really like that sorority if and when you go to another party there.
4. Talk to your Pi Chi. She is there to help you make the right decision for you. If you need to talk about which sororities you like/dislike, that is your Pi Chi's job.
5. Be mature in your decision-making. Be realistic about which members you feel most comfortable with.
6. Do not be influenced by others' opinions.

recruitment rules

For the fairness of everyone involved, these rules will be strictly enforced. Intentional violations of these rules can result in the violator's release from recruitment. If you are not clear about what you are allowed to do, please do not hesitate to call and ask us. If you think someone may have contacted you inappropriately, please call Greek Life at 334-844-4600.

PRIMARY RECRUITMENT

1. Positive Panhellenic Contact will begin with the start of fall sorority recruitment workshops and continue, except for scheduled parties, until the potential members receive bids. Positive Panhellenic Contact prohibits any oral or written communication. Members may not contact or be contacted by potential members or Pi Chis.
2. Potential members not living in residence halls must abide by the same rules and regulations as those living on campus.

3. Potential members must attend all meetings with their Pi Chis.
4. Potential members must attend the maximum number of parties assigned for each day. If any conflicts arise, notify a Pi Chi immediately.
5. To withdraw from recruitment, a potential member must complete a formal withdrawal form within one hour of receiving her party invitations or within one hour after the last scheduled party of the day.
6. Each potential member must, without talking to anyone, proceed to the place where she will be making her preferences immediately after the last preferential party. Members may not contact or be contacted by potential members or Pi Chis.



virtual ice water teas

WHAT TO WEAR

You should wear a cute and casual outfit. Athleisure wear will be great. It is important to be comfortable and feel your best during this round. You want to be in the right mindset while watching videos to get to know each chapter!

Visit us on Pinterest @AubPanhellenic for outfit inspiration.

WHAT TO EXPECT

Each chapter has worked hard to prepare a video for you to watch for Ice Water Tea Round this year. The purpose of these videos is to give you an introduction to each sorority in the Panhellenic community. During this round, you will watch each video prepared by the individual chapters that showcase their mission and their values.



Having trouble deciding which chapters you would most like to join? Ask yourself these things after Ice Water Teas to help you make your decisions.

1. Which sororities' mission and values seem to align with yours the most?
2. After watching these videos, write down a set of qualities you have that you could see yourself bringing to that sorority.
3. It is possible that you will not receive every invitation back you desire. Take this time to focus on the basics of each sorority. How do you feel about each of the 18 based on what you learned in this round? Write down your emotions for each chapter, as well as your attitude after watching the videos. If you don't receive every invitation you want, discuss this with your Pi Chi.

philanthropy

WHAT TO WEAR

To add to the fun of these days, you will be casual and comfortable. You may wear structured shorts and skirts along with the shirt provided to you.

Visit us on Pinterest @AubPanhellenic for outfit inspiration.

WHAT TO TALK ABOUT

Philanthropy Round is a time to talk about service and giving to others. Ask your hostess about other projects that the sorority participates in throughout the year. This is also a good time to ask questions about anything that you did not get a chance to learn about during Ice Water Teas. These days are a fun chance to ask more in-depth questions with the sorority women while you work to help others.

WHAT TO EXPECT

Panhellenic is proud to have philanthropy as an Auburn tradition. Community service is an important aspect of each sorority and Panhellenic as a whole. Therefore, this round is an important part of recruitment. During this round, you may visit up to 13 sororities and you will learn more about the sorority and the philanthropy that they are passionate about.



Ask yourself these questions after the Philanthropy Round to help you make your decisions.

1. List the skills and abilities you have that you would like to share with a sorority. In which chapters do you think these could be utilized?
2. Take a minute and think about your feelings after each chapter you visited. Write down 2 positives and 1 negative of each of those chapters.
3. It is possible that you will not receive every invitation back you desire. Take this time to focus on the basics of each sorority. How do you feel about each sorority you visited based on what you learned in this round? Write down your emotions for each chapter. If you don't receive every invitation you want, discuss this possibility with your Pi Chi.

sisterhood

WHAT TO WEAR

A dress suitable for a nice dinner is recommended. Most women dress up their look a little more in this round.

Visit us on Pinterest @AubPanhellenic for outfit inspiration.

WHAT TO TALK ABOUT

This round is a special time to communicate. Conversation is longer, more meaningful and more in-depth. You should be looking for certain attributes you want in your sorority and your sorority sisters. Scholarship, sincerity, friendliness and adaptability are all strong attributes that are emphasized in this round. Since this day is a chance for the sororities to boast about themselves and their accomplishments, listen carefully to decide if the achievements and activities they speak of are also important aspects of your college experience.

WHAT TO EXPECT

This round is a fun chance to learn more about the sororities' personalities and the sisterhood in each chapter. You may visit up to eight sororities on this day. These parties are 45 minutes long and you will learn more about what each sororities sisterhood means to them.



Ask yourself these questions after the Sisterhood Round to help you make your decisions.

1. Make a list of the qualities you admire in your closest friends. Now, list the chapters you visited today. Based on your visit, which chapters exhibited some of the qualities of your friends?
2. What chapters stood out to you today the most?
3. It is possible that you will not receive every invitation back you desire. Take this time to focus on the basics of each sorority. How do you feel about each sorority you visited based on what you learned in this round? Write down your emotions for each chapter. If you don't receive every invitation you want, discuss this possibility with your Pi Chi.

preference

WHAT TO WEAR

This is the dressiest round of all. A dress, pantsuit, or jumpsuit you might wear to a wedding reception will be appropriate. If you are comfortable in heels, this is a good day to wear them. Many people believe that black dresses are required, but that is not true.

Visit us on Pinterest @AubPanhellenic for outfit inspiration.

WHAT TO TALK ABOUT

Your hostess may talk privately with you about your feelings for her sorority and answer any final questions you have. During this time, you should listen carefully to what the women tell you about their sisterhood. Listen to what they say. These women are revealing to you the character of their sorority. These women want you to know what their sorority means to them and what it could mean to you.

WHAT TO EXPECT

Preference Day is the most serious day of recruitment. You may visit two sororities for 50 minutes each. At each sorority, you may be greeted by one member who has been a special friend to you during the week. This round can be the most emotional step of the sorority recruitment process, because it is during preference round that you must decide which sorority you would like to join. The parties are usually serious and subdued. The most important thing to do is to be sure you base your decision on your own feelings.



Your recruitment week is coming to a close, and you have one last round of decisions to make. List each sorority you visited for preference. Read each statement below as it relates to each sorority and decide whether your response to that statement would be “yes,” “no” or “not sure.”

1. I would be happy to participate in this chapter's philanthropy because it is interesting to me.
 2. I would be happy to participate in this chapter's activities on campus.
 3. This sorority seems genuinely interested in having me as a member.
 4. This sorority seems open to listening to the ideas of its members and willing to discuss important issues.
 5. This sorority has members that share my recreational and leisure interests.
 6. This sorority has members with the same academic interests as me and would help me keep up with my studies.
 7. The amount of time that I would be required to spend participating in chapter activities is reasonable.
 8. This sorority has an environment that I believe will encourage me to develop my talents as well as my new skills.
 9. I feel comfortable talking with the members of this sorority about things that are important to me.
 10. This sorority seems like a group that would support me as I progress all the way through college.
 11. I can be myself when I am with the members of this sorority.
 12. The members of this sorority seem to like one another, and I think I would fit in well there.
 13. Being a member of this sorority can positively contribute to my college experience.
 14. I have qualities that would make me an asset to the sorority.
 15. At this point, I think I would like to be a member of this sorority.
- If almost all of your answers about a particular sorority are “yes,” it is likely that you are thinking seriously about the sorority. Your feelings about that sorority are positive, and it is likely that you would thoroughly enjoy being a lifetime member of that sorority.
- If you answered “no” to several of the statements about a particular sorority, you might want to give some thought as to whether or not a long-term membership with that chapter (or any chapter) would be satisfying to you. In general, if your feelings about at least some aspects of the chapter are somewhat negative, this may cause you not to be truly happy as a member there. If you think you want to talk about this with someone, please go to your Pi Chi, or a Recruitment Executive Board member, to discuss your concerns.
- If you chose “not sure” as an answer for any sorority, these are things you still need more information on. Use these questions as a guide as you attend the preference party of that sorority.

bid day

WHAT TO WEAR

Your new sorority will give you a shirt right away, so wear a shirt or tank top you can layer under a T-shirt. Any shorts/skirts are fine with whatever shoes you want. You will take lots of photos, so remember that as you get ready.

Visit us on Pinterest @AubPanhellenic for outfit inspiration.

WHO ATTENDS

Bid Day is for the current sorority members to meet and celebrate their new members.

WHAT TO EXPECT

This is the day that invitations to join a sorority are distributed. Those who receive an invitation to join a sorority and accept it will be welcomed with open arms by their new sisters. Bid Day is a dry event free from alcohol and other illegal substances. You will be expected to go to the chapter room to spend time with your new sisters and become better acquainted with your new member class. Once bids are distributed, Continuous Open Bidding begins.



continuous open bidding

Continuous Open Bidding (COB) is a casual and unstructured way for sororities to add women to their chapters outside of primary recruitment. COB does not operate on a schedule, so some sororities will complete their COB process before another chapter. If you are interested in sorority membership and a chapter invites you to a COB event, you should attend. This can be a great way to try and find a sorority home at Auburn if formal recruitment is not for you. Students who are interested in COB opportunities may fill out an interest form that can be found on the Panhellenic website at aub.ie/aupan.

WHO IS ELIGIBLE TO COB? All women who are full-time Auburn University students are eligible to participate as long as they meet three conditions: (1) they must have never been initiated into a National Panhellenic Conference sorority before, (2) they must not have received a bid from fall primary recruitment and turned it down in the same semester, and (3) they must not have accepted a COB bid and later turned it down in the same semester.

COB BY THE NUMBERS? Last year, our community gave around 150 bids through the COB process. This includes the fall and the spring semester.

WHEN IS COB HELD? COB events are held whenever the chapter chooses. They may plan a small dinner with some potential members and a few sisters or watch a sporting event together. The location of the event is not important, as long as the event is alcohol-free.

WHICH SORORITIES HAVE COB? Some sororities will be eligible, but choose not to participate in COB, while others will participate as soon as they have room for one person. Some sororities will have it one year and not the next. If you want to be a sorority member, putting your name in the COB mix is a great way to get involved. If you are only interested in joining one specific sorority, COB might not be for you.

HOW WILL SORORITIES DECIDE WHO TO INVITE? Sororities hear of people who are interested in COB in several different ways. If you participated in recruitment but ended up not joining a sorority, sororities will have your information already on file. Sororities will also poll its members asking for interested individuals. For this reason, it is important that you let your sorority friends know that you would be interested in joining, should the chapter conduct COB. Chapters will also reach out to Greek Life, where we keep a database of COB interest forms. Interested women should complete the interest form so that their information will be on file.

CONTINUOUS OPEN BIDDING

Continuous Open Bidding is commonly referred to as COB. It is a period of informal recruitment that is held throughout fall and spring semesters. COB is a great opportunity to pledge a sorority if you do not join during fall recruitment. However, not every sorority will participate in the COB process.

GUIDELINES FOR CONTINUOUS OPEN BIDDING

1. COB will begin on Bid Day, immediately following bid distribution.

2. Women interested may sign up for COB on Auburn Panhellenic's website after recruitment ends. Women may also stop by the Greek Life office if they have questions about the process.

3. When COB begins, sororities participating may have as many informal meetings as desired at any time during fall or spring semester.

4. During COB, potential members may not attend any type of sorority socials, including formals. The potential member may attend fellowships, dinners, etc. with the sorority.





“Panhellenic has made such a huge impact to my college experience. It has given me a group of girls that I know I can always count on. I have never had friends like the ones I have made both in my chapter and across the Panhellenic community that have encouraged me and loved me through my years at Auburn.”

- Amy Beversluis
Member of Delta Delta Delta

FAQs

WHAT IF I WANT TO TURN DOWN A BID I RECEIVE? If you receive a bid and decide not to accept it, you may not participate in recruitment for one calendar year and you may not participate in Continuous Open Bidding. We urge you to think very carefully before turning down a bid. Emotions have a tendency to cloud thinking and judgment. Turning in a bid one week after Bid Day puts you in the same position as if you turn it down immediately.

HOW DO SORORITIES DECIDE WHO TO INVITE BACK? As your schedule of parties shrinks each round, so does the number of women each chapter is allowed to invite back. Every potential member has something to offer a group, but each group must release potential members, just as you may need to release some chapter invitations. Each chapter uses a democratic process, considering the thoughts of each undergraduate member of the chapter. Every sorority has a different way of choosing who to invite, but they all have alumnae advisors present at all meetings to ensure that the policies are correctly followed and fair consideration is given to all potential members.

IF I WITHDRAW FROM RECRUITMENT, CAN I DECIDE TO JOIN LATER? Yes. You can wait until the next year's primary recruitment, or you can try to join through Continuous Open Bidding during the school year. You can express interest by completing the form on our website.

DO I HAVE TO FOLLOW THE SCHEDULE AND ATTEND ALL OF THE PARTIES? Yes. The object of recruitment is to give yourself the information you need about the chapters for you to make the best decision. Therefore, you must accept the maximum number of invitations your schedule can accommodate. If you choose to miss parties you can be released from recruitment.

IF I GO THROUGH RECRUITMENT, AM I OBLIGATED TO JOIN? No. This is a time to assess whether you wish to join a sorority. Many women participate in recruitment to make friends and to see what the Greek community is all about.

ARE THERE REQUIREMENTS TO PARTICIPATE IN RECRUITMENT? There is no grade requirement to go through recruitment, but many individual sororities have a minimum GPA requirement. GPAs vary from sorority to sorority but begin at about 3.0. Each year, women who have GPAs lower than 3.0 do participate and many receive bids, but it is important to know that your chances of receiving a bid are significantly lessened if your grades are low.

I'M A LEGACY TO A SORORITY. IS THERE ANYTHING I SHOULD KNOW? Each potential member is considered on an individual basis. Legacies are not obligated to join their mother's, sister's or grandmother's sorority, and sororities are not obligated to give bids to legacies. Chapters are looking for more than just a family connection to the group. It is important to do your research about legacy policy for each sorority, as many policies have changed.

a healthy recruitment

GET A GOOD NIGHT'S SLEEP

- Lack of sleep has been linked to these things: irritability, reduced immunity, distractedness, sloppiness, and memory problems. The start times for the morning won't change, but you choose when you go to bed.
- Stay on top of your game by setting a firm bedtime and sticking to it. You have all year to get acquainted with your roommate.
- If you cannot fall asleep at bedtime, sit quietly and read a paper book, setting the mood for sleep. Do not play on your phone or computer.

STAY HYDRATED

- Our bodies consist of up to 75% water, or about 10 to 12 gallons, so replenishing your body's water supply is crucial for its proper function.
- During the hot summer, remember to consume at least nine 8-ounce glasses of water each day (HINT: about four bottled waters).
- Carry your own refillable water bottle with a spout or straw to increase fluid intake.

BALANCE YOUR PLATE

- Confused about what to put on your plate? Try to make sure half of your plate consist of fruits or vegetables. The other half should include protein and whole grains.

EXERCISE IS A PRIORITY

- During recruitment, you are not as active as you feel like you are. Even a short walk around campus can improve your mood and confidence. Be sure to get 20 to 30 minutes of actual exercise each day.
- Exercise boosts your energy levels by improving your cardiovascular health.
- If you exercise during the day, you will have an easier time falling asleep at night.
- Exercising with someone else is a great way to spend time together and build a friendship.

DON'T MISS ANY MEALS

- Skipping meals affects your blood sugar and energy levels making it difficult to focus.
- Missing meals can cause mood swings, fatigue, headaches and shaking.
- Eat three full meals and snacks. Bring snacks with you to eat between parties. Healthy snacks (carrot sticks, string cheese, apples etc...) will give you the most energy without crashing later.
- Drink wisely! As a beverage of choice, ask for water, unsweetened tea and drinks without added sugars.
- Opt for wheat bread for sandwiches. Start your meal with a salad packed with veggies to help control hunger and feel satisfied sooner.
- Choose fish for a healthy dose of good protein and fat that makes your hair, skin and nails healthy!

"Don't forget to check on yourself this week! You will only do your best when you feel your best! Listen to your body and take care of your mind. Getting enough sleep, eating balanced meals, journaling, or going on a short walk can help manage feelings that may seem overwhelming. This is a hard week, and you deserve to be kind to yourself! Prioritize what brings you joy, take time to do something that relaxes you, and be where your feet are in each moment!"

- Bailey Barnes, Director of Health and Wellness

bill of rights

1. The right to be treated as an individual.
2. The right to be fully informed about the recruitment process.
3. The right to ask questions and receive true, objective answers from Pi Chis and sorority members.
4. The right to be treated with respect.
5. The right to be treated as a capable and mature person without being patronized.
6. The right to ask how and why, and to receive straightforward answers.
7. The right to have and express opinions to Pi Chis.
8. The right to have inviolable confidentiality when sharing information with Pi Chis.
9. The right to make informed choices without undue pressure from others.
10. The right to be fully informed about the binding agreements implicit in preference card signing.
11. The right to make one's own decisions, and to accept full responsibility for the results of those decisions.
12. The right to have a positive, safe, and enriching recruitment and pledging experience.
13. Potential New Members are expected to act with respect in all recruitment parties.



"Panhellenic has allowed me to make so many loyal, hilarious, and consistent friendships with women from all across the nation that I would have never thought I would have met. I have also been given opportunities to serve in positions that have influenced my life and allowed me to gain transferable skills for my future. I am eternally grateful for everything Auburn Panhellenic has done for me in my last three years here, and I am looking forward to the best senior year!"

- Sydney Blaxton, Head Pi Chi

finances

An important thing to consider when deciding to join a sorority should be whether or not you are able to meet the financial obligations. Both you and your parents should be aware of the fees, dues and other expenses. Each sorority charges a new member fee when you join. At initiation time, you will be charged an initiation fee. As your membership continues, you will pay regular dues, either monthly or semesterly, throughout your college career. The cost of extras, like T-shirts, pictures, jewelry, and stationery varies with each individual. Although you are not required to purchase any of these things, most women choose to do so. A photographer will be present at most sorority events, and T-shirts and sweatshirts are usually available for events as well. In addition to purchasing shirts for themselves, many women also choose to purchase one for their date. Pictures usually cost about \$2 and shirts can be anywhere from \$10 to \$20.

In order to pay for the non-revenue space in sorority buildings, commonly referred to as chapter rooms, all sorority members are assessed a fee for the use of these facilities. This fee is called the "Panhellenic Facility Fee" and will appear on each student's bursar bill, a.k.a e-bill, rather than be paid to the sorority. This fee will be \$105 per semester each fall and spring. The Greek Fee of \$15 per semester is paid by every Greek student at Auburn University. This fee goes towards resources, presentations, speakers, and many other services that Greek Life provides for students in fraternities and sororities.

Each sorority has a hall in the Sorority Village that sleeps around 40 people. Sororities strongly encourage their members to live on the hall. The hall is a fun place to live with all of your best friends. It is right on campus, next to the Neville Arena and Village Dining. It is a short walk to class or the Campus Rec.

AN ESTIMATED AVERAGE OF SORORITY COSTS

First Year Costs

New member dues (first semester only):	\$1,170
General member dues (per semester):	\$785
Facility fee:	\$105

alpha chi omega

ΑΧΩ

COLORS Scarlet Red & Olive Green

MASCOT Lyre

PHILANTHROPY Domestic Violence Awareness, Alpha Chi Omega Foundation

Total New Member Fees: \$1,577

New Member Dues: \$1,165
Pledge fee: \$199
Parlor Fee: Included
Initiation Fee: Included
Badge Fee: \$63
Technology Fee: Included
Inter/National Fee: Included
Out of pocket: \$150

Total Member Fees: \$950

Member Dues: \$580
Inter/National Fee: \$220
Parlor Fee: Included
Technology Fee: Included
Out of pocket: \$150

alpha delta pi

ΑΔΠ

COLORS Azure Blue & White

MASCOT Alpie the Lion

PHILANTHROPY Ronald McDonald House

Total New Member Fees: \$882

New Member Dues: \$459
Pledge fee: \$103
Parlor Fee: \$10
Initiation Fee: \$142
Badge Fee: \$168
Technology Fee: Included
Inter/National Fee: Included
Out of pocket: Optional

Total Member Fees: \$585

Member Dues: \$459
Inter/National Fee: \$116
Parlor Fee: \$10
Technology Fee: Included
Out of pocket: Optional

alpha gamma delta

ΑΓΔ

COLORS Red, Buff & Green

MASCOT Squirrel

PHILANTHROPY Fighting Hunger

Total New Member Fees: \$1,141

New Member Dues: \$533
Pledge fee: \$125
Parlor Fee: \$37
Initiation Fee: \$200
Badge Fee: \$58
Technology Fee: \$38
Inter/National Fee: \$75
Out of pocket: \$75

Total Member Fees: \$688

Member Dues: \$533
Inter/National Fee: \$5
Parlor Fee: \$37
Technology Fee: \$38
Out of pocket: \$75

alpha omicron pi

ΑΟΠ

COLORS Cardinal

MASCOT Panda

PHILANTHROPY The Arthritis Foundation

Total New Member Fees: \$1,659.25

New Member Dues: \$1,063.25
Pledge fee: \$45
Parlor Fee: \$151
Initiation Fee: \$170
Badge Fee: \$99
Technology Fee: Included
Inter/National Fee: \$131
Out of pocket: Optional

Total Member Fees: \$1,393.25

Member Dues: \$1,048.25
Inter/National Fee: \$194
Parlor Fee: \$151
Technology Fee: Included
Out of pocket: Optional

alpha xi delta

ΑΞΔ

COLORS Light Blue, Dark Blue & Gold

MASCOT BetXi Bear

PHILANTHROPY Kindly Hearts Campaign

Total New Member Fees: \$1,000

New Member Dues: \$405
Pledge Fee: \$65
Parlor Fee: \$70
Initiation Fee: \$210
Badge Fee: \$70
Technology Fee: Included
Inter/National Fee: \$110
Out of pocket: \$70

Total Member Fees: \$635

Member Dues: \$380
Inter/National Fee: \$110
Parlor Fee: \$70
Technology Fee: Included
Out of pocket: \$75

chi omega

ΧΩ

COLORS Cardinal & Straw

MASCOT Owl

PHILANTHROPY Make-a-Wish Foundation

Total New Member Fees: \$1,515

New Member Dues: \$400
Pledge Fee: \$75
Parlor Fee: \$200
Initiation Fee: \$125
Badge Fee: \$275
Technology Fee: Included
Inter/National Fee: Included
Out of pocket: \$440

Total Member Fees: \$1,165

Member Dues: \$400
Inter/National Fee: \$125
Parlor Fee: \$200
Technology Fee: Included
Out of pocket: \$440

delta delta delta

ΔΔΔ

COLORS Silver, Gold & Blue

MASCOT Dolphin

PHILANTHROPY Children's Cancer Charities

Total New Member Fees: \$1,038

New Member Dues: \$498
Pledge Fee: \$48
Parlor Fee: \$50
Initiation Fee: \$162
Badge Fee: \$95
Technology Fee: Included
Inter/National Fee: \$127
Out of pocket: \$58

Total Member Fees: \$733

Member Dues: \$498
Inter/National Fee: \$127
Parlor Fee: \$50
Technology Fee: Included
Out of pocket: \$58

delta gamma

ΔΓ

COLORS Bronze, Pink & Blue

MASCOT Anchor

PHILANTHROPY Delta Gamma Foundation (Service for Sight & Joining Forces)

Total New Member Fees: \$1,141

New Member Dues: \$714
Pledge Fee: \$45
Parlor Fee: \$75
Initiation Fee: \$135
Badge Fee: \$40
Technology Fee: \$52
Inter/National Fee: \$5
Out of pocket: Optional

Total Member Fees: \$688

Member Dues: \$662
Inter/National Fee: \$5
Parlor Fee: Included
Technology Fee: \$52
Out of pocket: Optional

delta zeta

ΔΖ

COLORS Rose & Green

MASCOT Turtle

PHILANTHROPY Speech & Hearing, The Painted Turtle, The Starkey Hearing Foundation

Total New Member Fees: \$996
 New Member Dues: \$448
 Pledge fee: \$90
 Parlor Fee: \$95
 Initiation Fee: \$140
 Badge Fee: \$138
 Technology Fee: Included
 Inter/National Fee: Included
 Out of pocket: \$85

Total Member Fees: \$593
 Member Dues: \$448
 Inter/National Fee: Included
 Parlor Fee: \$60
 Technology Fee: Included
 Out of pocket: \$85

gamma phi beta

ΓΦΒ

COLORS Pink & Brown

MASCOT Crescent Moon

PHILANTHROPY Building Strong Girls through Girls on the Run

Total New Member Fees: \$1,678
 New Member Dues: \$720
 Pledge fee: \$179
 Parlor Fee: \$179
 Initiation Fee: Included
 Badge Fee: \$100
 Technology Fee: \$50
 Inter/National Fee: \$350
 Out of pocket: \$100

Total Member Fees: \$814
 Member Dues: \$530
 Inter/National Fee: \$65
 Parlor Fee: \$89
 Technology Fee: \$30
 Out of pocket: \$100

kappa alpha theta

ΚΑΘ

COLORS Black & Gold

MASCOT Kite

PHILANTHROPY Court Appointed Special Advocates (CASA), Kappa Alpha Theta Foundation, The Friendship Fund

Total New Member Fees: \$1,731.35
 New Member Dues: \$1,063.35
 Pledge fee: Included
 Parlor Fee: Included
 Initiation Fee: \$180
 Badge Fee: Included
 Technology Fee: Included
 Inter/National Fee: \$5
 Out of pocket: \$100

Total Member Fees: \$665
 Member Dues: \$550
 Inter/National Fee: \$5
 Parlor Fee: Included
 Technology Fee: Included
 Out of pocket: \$100

kappa delta

ΚΔ

COLORS Olive Green & Pearl White

MASCOT Teddy Bear

PHILANTHROPY Girl Scouts of the USA, Prevent Child Abuse America, Special Deliveries of Lee County

Total New Member Fees: \$1,731.35
 New Member Dues: \$1,063.35
 Pledge fee: \$310
 Parlor Fee: \$50
 Initiation Fee: \$201
 Badge Fee: \$54
 Technology Fee: Included
 Inter/National Fee: \$53
 Out of pocket: Included

Total Member Fees: \$896.35
 Member Dues: \$749.35
 Inter/National Fee: \$97
 Parlor Fee: \$50
 Technology Fee: Included
 Out of pocket: Included

kappa kappa gamma

ΚΚΓ

COLORS Light Blue & Dark Blue

MASCOT Owl

PHILANTHROPY Reading is Fundamental, Girl's Academy, The Kappa Kappa Gamma Foundation

Total New Member Fees: \$1,092.79
 New Member Dues: \$523.79
 Pledge fee: Included
 Parlor Fee: \$250
 Initiation Fee: \$175
 Badge Fee: \$52
 Technology Fee: Included
 Inter/National Fee: \$92
 Out of pocket: Optional

Total Member Fees: \$781.52
 Member Dues: \$589.52
 Inter/National Fee: \$112.50
 Parlor Fee: \$100
 Technology Fee: Included
 Out of pocket: Optional

phi mu

ΦΜ

COLORS Rose & White

MASCOT Lion

PHILANTHROPY Children's Miracle Network Hospitals

Total New Member Fees: \$1,068
 New Member Dues: \$551
 Pledge fee: \$48
 Parlor Fee: \$110
 Initiation Fee: \$148
 Badge Fee: \$88
 Technology Fee: Included
 Inter/National Fee: \$98
 Out of pocket: \$25

Total Member Fees: \$674
 Member Dues: \$551
 Inter/National Fee: \$98
 Parlor Fee: Included
 Technology Fee: Included
 Out of pocket: \$25

pi beta phi

ΠΒΦ

COLORS Wine & Silver Blue

MASCOT Angel

PHILANTHROPY Read>Lead>Achieve

Total New Member Fees: \$1,338
 New Member Dues: \$814
 Pledge fee: \$35
 Parlor Fee: \$150
 Initiation Fee: \$125
 Badge Fee: \$25
 Technology Fee: \$34
 Inter/National Fee: \$55
 Out of pocket: \$100

Total Member Fees: \$937
 Member Dues: \$673
 Inter/National Fee: \$55
 Parlor Fee: \$75
 Technology Fee: \$34
 Out of pocket: \$100

sigma kappa

ΣΚ

COLORS Lavender & Maroon

MASCOT Dove

PHILANTHROPY Sigma Kappa Foundation, Inherit the Earth, Gerontology Research, Maine Seacoast Mission, Alzheimer's Disease Research

Total New Member Fees: \$1,264
 New Member Dues: \$540
 Pledge fee: \$97
 Parlor Fee: \$10
 Initiation Fee: \$180
 Badge Fee: \$55
 Technology Fee: \$32
 Inter/National Fee: \$100
 Out of pocket: \$250

Total Member Fees: \$932
 Member Dues: \$540
 Inter/National Fee: \$100
 Parlor Fee: \$10
 Technology Fee: \$32
 Out of pocket: \$250

sigma sigma sigma



COLORS Royal Purple & White

MASCOT Sailboat

PHILANTHROPY March of Dimes

Total New Member Fees: \$1,775
New Member Dues: \$1,100
Pledge fee: \$225
Parlor Fee: \$75
Initiation Fee: Included
Badge Fee: \$150
Technology Fee: Included
Inter/National Fee: \$225
Out of pocket: Optional

Total Member Fees: \$937.50
Member Dues: \$750
Inter/National Fee: \$112.50
Parlor Fee: \$75
Technology Fee: Included
Out of pocket: Included

zeta tau alpha



COLORS Turquoise Blue & Steel Grey

MASCOT Five-pointed crown

PHILANTHROPY Breast Cancer Education & Awareness

Total New Member Fees: \$1,030
New Member Dues: \$375
Pledge fee: \$100
Parlor Fee: \$62
Initiation Fee: \$150
Badge Fee: \$68
Technology Fee: \$20
Inter/National Fee: \$155
Out of pocket: \$100

Total Member Fees: \$712
Member Dues: \$375
Inter/National Fee: \$155
Parlor Fee: \$62
Technology Fee: \$20
Out of pocket: \$100

notes

Handwriting practice area consisting of 20 horizontal rows. Each row is defined by a solid top line, a dashed midline, and a solid bottom line, with a series of small orange dots along the midline.



**CLUB PILATES
AUBURN**

Book Your FREE Intro Class

334.414.4548
 2311 Bent Creek Rd Ste 600
 Auburn, AL 36830
clubpilates.com/auburn

A CLASS FOR EVERY BODY

From high-intensity to recovery and mobility - no matter your age or fitness level, there's a Club Pilates class for you.

—
 TONE · STRENGTH
 MOBILITY · BALANCE



WE UNDERSTAND

Leaving home is hard. Finding new sisters is meaningful.

We hope you find your perfect sorority family. If you need more than your sisters' support, we will be here.

Consider a new perspective.

Perspective COUNSELING AUBURN

www.perspectivecounselingauburn.com 334-329-6063

MAGNOLIA JAMES Boutique

PJ HARLOW DREAMWEAR



SOLD EXCLUSIVELY HERE

10% OFF YOUR FIRST PJ HARLOW PURCHASE WITH THIS AD

33.521.0063

1957 E. SAMFORD SUITE B AUBURN, AL

@SHOPMJBOUTIQUE_



STUDENT INVOLVEMENT

Getting involved with a campus organization is a great way to meet others, build your resume and learn skills future employers seek. Whether you are interested in community service, saving the bees, building robots or growing as a leader, Student Involvement has a community for everyone. With more than 550 student-led organizations, we make it easy to discover your path at Auburn.

involvement

BRANCHES

- Service Programs
- Emerge Leadership Programs
- Student Governance
- Student Organizations
- Student Programming
- Student Media



AU INVOLVE

Log on to browse all organizations today!
auburn.edu/auinvolve



BECAUSE 'WELCOME TO CAMPUS' SHOULD LAST MORE THAN A WEEK

AUGUST 8 - OCTOBER 2

The First 56, which includes hundreds of events hosted by campus departments and student organizations, offers **eight weeks** of programming designed to help connect you to campus!

A **jump-start** to your Auburn experience, join *The First 56* to meet your peers, learn about available campus resources and **have fun!**

View all events online by visiting:
aub.ie/welcomecalendar

@auinvolve



STUDENT INVOLVEMENT
STUDENT AFFAIRS

WRAPSODY

Visit us online to order your Bid Day Package & Greek gifts beginning mid-June!

112 N. College St. Auburn, AL 36830 | 334-887-7447

wrapsodyonline.com

@shopwrapsody





**BID DAY
PACKAGES,
ACCESSORIES,
GIFTS & MORE.**



SHOP NOW AT
www.lilyjaneboutique.com

334-521-7103

Midtown

1310 Opelika Road Suite B & C, Auburn, AL 36830



**Tanology is
Auburn's premier
Beauty Bar!**

**Visit us for spray tans,
rapid spray tans, lash
services, facials,
waxing, threading,
permanent makeup,
Botox, teeth whitening,
and so
much more!**

 TANOLOGYAU.COM

 (334) 748-1343

 @TANOLOGYAU





says

GO
GREEK!



THE BEST TOTAL BODY BARRE WORKOUT

IN STUDIO & ONLINE CLASSES

stay strong all semester with our student packages



SCAN WITH YOUR CAMERA & GET A FREE CLASS ON US

FOLLOW US ON SOCIAL: PURE BARRE AUBURN

| www.purebarre.com/al-auburn |

email: auburn@purebarre.com

call or text: 334.887.0007



close to campus.
close to chapter.


CLOSE TO SISTERS.

Why choose to live life on the hall?

- Convenient access to your chapter room and common spaces for meetings, studying and just hanging out!
- Having your sisters as your neighbors means that it will never be easier to form lifelong bonds.
- Access to all of the benefits of on-campus housing, including security shuttles, on-campus meal plan, and being able to move in for recruitment!

Community doesn't have to end after your freshman year. Live life on the hall!





BARBI

EST. AGRICOLA LAW 2017

*the sister you trust.
the attorney you need.*

127 south 8th street
opelika, alabama 36801
334.759.7557

EARLY MOVE-IN DINING

 <p>AUGUST 1-13TH M-F: 7:30-5 SAT: 9-5</p>	 <p>M-F: 7:30-5 SAT: 9-5</p>	 <p>STUDENT CENTER AUGUST 1ST-7TH M-F: 7:30-5 AUGUST 8TH-13TH M-F: 7-5 S: 9-5 VILLAGE AUGUST 1ST-13TH SUN-SAT: 9-9 SOUTH DONAHUE AUGUST 11TH-12TH 12P-7P</p>
 <p>AUGUST 1ST-7TH M-F: 7:30-5</p>	 <p>THE EDGE at Central Dining AUGUST 1ST-4TH 10:30A-1P AUGUST 5TH-7TH 10:30A-1P AND 5P-8P AUGUST 8-13TH M-TH: 7A-9P S: 8A-9P</p>	 <p><i>Terrell On the Hill</i> AUGUST 8TH-13TH M-F: 9-3</p>
 <p>AUGUST 1-13TH M-TH: 10-5 F: 10-3</p>	 <p>SALADWORKS M-F: 10:30-3</p>	

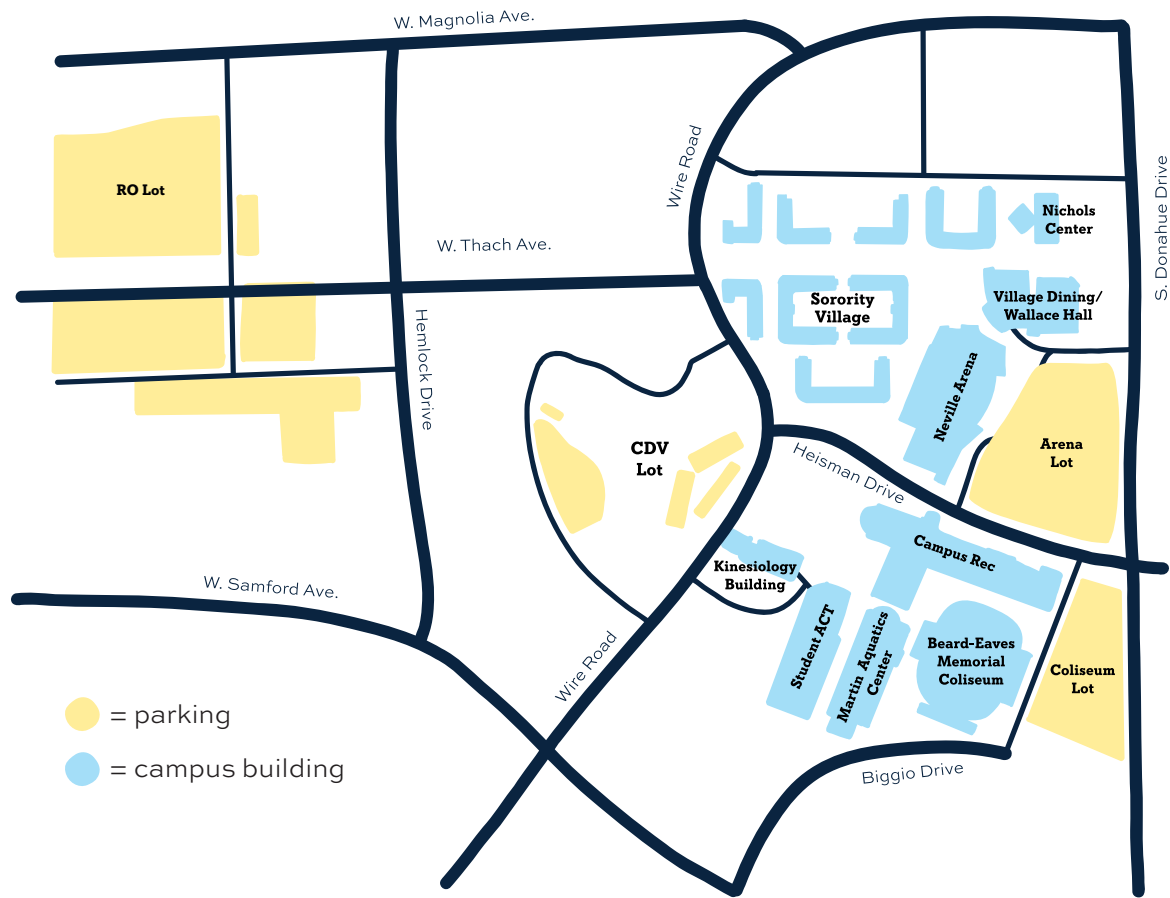


TIGER DINING

Check out updated hours and menus



parking info



● = parking
● = campus building

SORORITY MEMBERS

May park in RO lot, Arena, and Coliseum Lots
*August 4-6 the Arena and Coliseum lot will not be available

POTENTIAL NEW MEMBERS

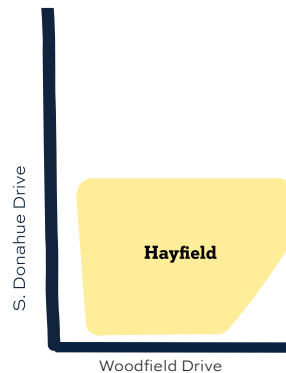
May park at the Hayfield and shuttle to and from the Village

RECRUITMENT COUNSELORS

May park in the Coliseum Lot

RECRUITMENT VOLUNTEERS

May park in the CDV Lot (this includes advisors, student leaders and other helpers)



DO NOT PARK

In A or B-zone spaces: Parking services will be monitoring all lots, and cars parked illegally will be ticketed or towed.

Along any streets: Unless there are clearly marked C-zone spots (there are very few), don't park on the street.

At the Auburn Medical Clinic: Those spaces are for people sick enough to need a doctor's visit. Please do not inconvenience them. That lot will be monitored and anyone parking there for any reason other than a doctor's visit will be towed.

At fraternity houses: There are a few fraternity houses near the Village, but they are not for public parking.

In the lots adjacent to the Village: Unless you have a pass to park there, those lots are off limits.

On the grass: If you are running late, you might be tempted to leave your car on a curb or on a grassy area. If you leave your car somewhere that is not a clearly marked space, do not expect it to be there when you come back.

At the Village residence halls: There are about 30 spaces that are next to the Village residence halls. Those are used as 15-minute parking by sorority officers and not for potential members.

Any place you are not positive about: If a parking space seems too good to be true, it probably is. Rather than trolling for the absolute closest place, be early and park in designated lots.

CAMPUS RESIDENTS

If you are living on campus, please follow the parking instructions that were provided to you with your move-in information.

OFF-CAMPUS RESIDENTS

Off-campus residents should park in the Hayfield on South Donahue across from the Nursing building. Please don't park in C-zone lots near the Coliseum or the Arena. Those lots will be used by the sorority members who will arrive hours before you do.

BID DAY PARKING

The best places to park will be the Magnolia Parking Deck and West 1 and 2 parking lots. People should still not park in handicapped spots or anywhere that is not an actual parking space. The best places to park on this day will be the RO lot at the end of West Thach.

WHEEL LOCK AND TOWS

In the event that you park in an unauthorized zone, you risk getting a wheel lock or your car towed. If you need to pick up your vehicle, you may do so Monday - Friday from 7:15 a.m. until 4:15 p.m. Please call 334-844-4143 or stop by the parking services office located at 330 Lem Morrison Drive. If you need your vehicle released after hours, you have until 10 p.m. to do so and you need to call 334-740-2077. The cost of removing the wheel lock or retrieving your vehicle from the impound lot is \$100.

Leischuck Hall



SORORITY NAMES & LETTERS

- ΑΧΩ Alpha Chi Omega
- ΑΔΠ Alpha Delta Pi
- ΑΓΔ Alpha Gamma Delta
- ΑΟΠ Alpha Omicron Pi
- ΑΞΔ Alpha Xi Delta
- ΧΩ Chi Omega
- ΔΔΔ Delta Delta Delta
- ΔΓ Delta Gamma
- ΔΖ Delta Zeta
- ΓΦΒ Gamma Phi Beta
- ΚΑΘ Kappa Alpha Theta
- ΚΔ Kappa Delta
- ΚΚΓ Kappa Kappa Gamma
- ΦΜ Phi Mu
- ΠΒΦ Pi Beta Phi
- ΣΚ Sigma Kappa
- ΣΣΣ Sigma Sigma Sigma
- ΖΤΑ Zeta Tau Alpha

Oak Hall

Wire Rd.

Heisman Dr.

Magnolia Hall



GREEK LIFE