

AUBURN UNIVERSITY

Panhellenic
RECRUITMENT HANDBOOK
2023



GREEK LIFE

Stay connected with us



aub.ie/aupan



Auburn Panhellenic



AU_Panhellenic



AubPanhellenic



Auburn Panhellenic

Table of Contents

ABOUT PANHELLENIC

A Letter from the VP for Recruitment	4
Code of Ethics	5
Greek Glossary	6
Greek Life Office	9
Greek Life 101	10
Panhellenic Council	12
Panhellenic Philanthropy	13
The EAGLES Program	14
Pi Chis	15
Executive Board	16
Recruitment Executive Board	17

WHY SHOULD I JOIN A SORORITY?

Why Should I Join?	20
Life as a First-Year Member	21
Testimonies from Current Members	22

RECRUITMENT 101

What to Bring	26
Recruitment Rules	27
Ice Water Teas	28
Philanthropy	30
Sisterhood	32
Preference	34
Bid Day	36
Continuous Open Bidding	38

MORE INFORMATION

Frequently Asked Questions	42
A Healthy Recruitment	43
Bill of Rights	44
Finances	45
Our Chapters	46
Notes	52
Advertisements	56
Dining	67
Parking	68

ABOUT PANHELLENIC



“The Panhellenic community has given me so many opportunities. I have gotten to know so many people that would’ve never been possible without getting involved in the Panhellenic community. Not only has Panhellenic allowed me to get involved, but it has also allowed me to view the unique sisterhoods of each sorority.”

ELLIE DAYHUFF
MEMBER OF ALPHA CHI OMEGA

LETTER FROM

Vice President for Recruitment

Dear Potential New Members,

War Eagle and welcome to the Plains! This handbook has all the information you will need about the Auburn Panhellenic recruitment process, as well as more information on the chapters in our community.

Our primary recruitment process has been carefully designed to give you knowledge about the Panhellenic community and the chance to build fresh, lasting relationships. My hope is that you find a place to call home at Auburn, whether you decide to join a Panhellenic sorority at the end of the week or decide to only spend recruitment with us. You might see yourself in one or more of the chapters throughout the course of the week and believe you already know where you want to return to on Bid Day. I want to challenge you to make the choices that will help you become the person you want to be when you leave the Plains in a few years. Focus on your identity and values and allow yourself to truly explore each chapter. You can join not only an amazing chapter, but also the Panhellenic community, which is full of women who are eager to welcome you. Our chapters are all different, but they all share the same values of academic excellence, social responsibility, leadership, and service to our campus and community.

Remember that you have your Pi Chi, other Pi Chis, and the Recruitment Executive Board to confide in throughout the week. Do not be afraid to stop us and ask any questions you may have, or simply to share how your week is going. We are here to listen, serve you, and make sure that you have the best recruitment experience possible!

Take some time to enjoy yourself this week; breathe and allow yourself to be surrounded by women who will challenge, empower, and inspire you for the better. I wish you the best of luck as you embark on your journey into Auburn Greek Life. I hope you make the most of this week and cherish all the new friendships you make.

We are so glad you are here, and we look forward to meeting you soon!

War Eagle,
Madeline Lewis
Panhellenic Vice President for Recruitment



Code of Ethics

“We, the undergraduate members of women’s fraternities at Auburn University agree to promote honesty, respect, and sisterhood through adherence to the unanimous agreements and all amendments established by the National Panhellenic Conference. Recognizing that we represent the Greek community, we strive through thought, word, and action, to uphold the traditions, fine standards, and values long held by Auburn women. As members of the Panhellenic Council, we stand for academic excellence, social responsibility, leadership, and service to our college campus and community. In accordance with the dignity and character of fraternity women, we pledge to treat all collegians, both Greek and non-Greek, with the utmost respect and honor. We believe that the highest level of trust should exist between individual chapters and their members, fostering a spirit of friendship and harmony. These are the ideals, which will establish a legacy for future generations of Auburn women.”

“Coming from out of state as the only one from my high school, I was very scared that I wasn’t going to be able to make friends easily. Not only has Auburn Panhellenic given me friends inside of my own sorority, it has also brought me so many friends and connections through Panhellenic in my role as JP last year and Delegate this year. I am forever thankful for the people I have met that have made me happy to call Auburn home!”

BELLA ORTIZ
Member of Gamma Phi Beta

Vocabulary

ACTIVE: A sorority member who has been formally initiated by her chapter into a lifelong membership.

ALUMNA: A sorority woman who has completed her undergraduate sorority membership. Usually, it is someone who has graduated.

BID: A formal invitation to pledge a sorority.

CONTINUOUS OPEN BIDDING: The period in which any group with invitations to extend may pledge a woman without scheduled parties or bidding.

INITIATION: The formal ceremony that brings new members into full membership of the sorority.

INTENTIONAL SINGLE PREFERENCE: When a potential member attends the preference parties of more sororities than she lists on her preference card.

LEGACY: A woman whose mother, sister, or grandmother is an alumna or collegiate member of a national sorority. It is important to do your own research on legacy information for each chapter. A lot of legacy information has changed.

NATIONAL PANHELLENIC CONFERENCE (NPC): Made up of 26 women's-only inter/national member organizations, the National Panhellenic Conference is the world's largest umbrella organization specifically charged with advancing the sorority experience.

PANHELLENIC COUNCIL: The unifying, coordinating, and overseeing body of all eighteen National Panhellenic Conference (NPC) sororities on Auburn's campus.

POTENTIAL NEW MEMBER (PNM): A collegian who is participating in formal or informal recruitment.

RECOMMENDATION: A letter or statement recommending a woman for membership. It can be sent to the Auburn undergraduate chapter the author is affiliated with. It is the sorority's responsibility to obtain recommendations.

Sorority Names & Letters

ΑΧΩ
ALPHA CHI OMEGA

ΑΔΠ
ALPHA DELTA PI

ΑΓΔ
ALPHA GAMMA DELTA

ΑΟΠ
ALPHA OMICRON PI

ΑΞΔ
ALPHA XI DELTA

ΧΩ
CHI OMEGA

ΔΔΔ
DELTA DELTA DELTA

ΔΓ
DELTA GAMMA

ΔΖ
DELTA ZETA

ΓΦΒ
GAMMA PHI BETA

ΚΑΘ
KAPPA ALPHA THETA

ΚΔ
KAPPA DELTA

ΚΚΓ
KAPPA KAPPA GAMMA

ΦΜ
PHI MU

ΠΒΦ
PI BETA PHI

ΣΚ
SIGMA KAPPA

ΣΣΣ
SIGMA SIGMA SIGMA

ΖΤΑ
ZETA TAU ALPHA



Greek Life Office

Potential Members,

Congratulations on your admission to Auburn University! We are so excited about for your interest in our community. The 18 Panhellenic sororities offer so much to their members by way of fun, friendship, and memories. The activities our sororities participate in help their members develop leadership skills that will last a lifetime, while contributing to our campus and community.

The best advice we can give you is to use this time to discover the unique aspects of each group. If you truly want to be a sorority member, you can find something excellent about each group at Auburn. This week, you should carefully think about each sorority and what it can offer you, as well as what you can bring to it. Hopefully, this week you will find your new home away from home. However, one thing that makes Auburn so great is that being a sorority member is not a prerequisite for involvement. So, if you decide that sorority membership is not for you, there are still many ways to get involved and make friends on campus. Remember that whether or not you join, you're in for a great time here on the Plains.

During and after recruitment, the Greek Life Staff, Panhellenic Officers and your Pi Chi are here to help you, whether you join or not. Look for us in our recruitment shirts and name tags this week, and please let us know if we can assist you in any way. We wish you the best of luck as you begin your journey into sorority life.

WAR EAGLE!

Tootie & Kazmine



**GREEK LIFE
COORDINATOR**



**GREEK LIFE
GRADUATE ASSISTANT**

Greek 101

Auburn University Greek Life is a vibrant part of the Auburn student experience. With 50 organizations across three governing councils, more than 8,500 Auburn students call one of our fraternities or sororities home. Auburn fraternities and sororities offer students a wide variety of experiences, including service projects, philanthropic efforts, leadership development, and social engagement. Membership provides students with connections to alumni from across the nation and in every professional industry and area. All fraternities and sororities were founded on core values and beliefs that are centered on improving the lives of their members while the members improve the campus and community. By joining a fraternity or sorority, the membership is making a commitment to uphold the standards of the organization and the institution. Membership in a fraternity or sorority is open to regularly enrolled undergraduate students and is selected by the current membership within the organization.



Councils

INTERFRATERNITY COUNCIL

@auburnifc

There are 26 fraternity chapters affiliated with the Auburn Interfraternity Council (IFC), which serves as the governing body for national and international men's fraternities, many of which are affiliated with the North American Interfraternity Conference (NIC). These 26 chapters host recruitment activities throughout the fall and spring and have a formal recruitment week at the beginning of each semester.

NATIONAL PAN-HELLENIC COUNCIL

@aunphc

The six fraternities and sororities of the Auburn National Pan-Hellenic Council (NPHC) are affiliated with the National Pan-Hellenic Council, which consists of nine fraternities and sororities known as the Divine Nine. These organizations are historically African American fraternities and sororities that participate in a deferred membership selection process known as Intake. For an aspirant to participate in a chapter's Membership Intake Process (MIP) the aspirant must have completed at least 12 Auburn credit hours and have attended Auburn NPHC's Meet the Greeks during the academic year of Intake participation.

PANHELLENIC COUNCIL

@au_panhellenic

The 18 sorority chapters affiliated with the Auburn Panhellenic Council select membership through a mutual selection process which primarily takes place before the start of the fall term, with some opportunities available throughout the year. These 18 chapters are affiliated with the National Panhellenic Conference (NPC), which is the umbrella organization for 26 national and international sororities and women's fraternities across North America.

FAST FACTS

3.39

all-Greek GPA in spring 2023, which is above the all-undergraduate GPA

8,500+

students involved in Greek organizations

50

Auburn's Greek community is home to 50 active fraternities and sororities ranging from 4 - 340 members.



Panhellenic Council

The Panhellenic Council at Auburn University is the unifying, coordinating, and governing body of the 18 National Panhellenic Conference (NPC) sororities on Auburn's campus. It became an official Panhellenic association in September of 1929 and has received numerous National Panhellenic Conference awards over the years such as Excellence in Academics, Leadership, Publications, Community Service, and Recruitment. All sorority members are automatically part of the Panhellenic Association. The Panhellenic Council is composed of women from each sorority who successfully run the Panhellenic community, specifically six elected executive officers and each chapter's President, Delegate, and Junior Panhellenic Delegate. Specifically, six elected executive officers, each chapter's President, Delegate, and a Junior Panhellenic Delegate. It is also composed of appointed cabinet members, committees, and advisors.

The Panhellenic Council is an integral part of Auburn's Greek community and provides an outlet for numerous involvement opportunities. Its main objective is to enhance the college experience of its members through fostering friendships, leadership opportunities, and personal growth. The Council is also responsible for promoting scholarship, philanthropy, and the safety and well-being of each chapter and its members, as well as the Greek community. In addition, the Panhellenic Council works alongside IFC and NPHC to sponsor service activities and leadership growth programming. Finally, the Panhellenic Council oversees recruitment to make it a fun, memorable, and fair experience for all who participate.

Auburn Panhellenic Council's primary recruitment is open to all enrolled Auburn University students who identify as women regardless of race, religion, color, age, national origin, disability, or veteran status. We are happy that you are interested in joining us as we celebrate our 94th year on Auburn's campus.

Panhellenic Philanthropy

GREEK SING

The Auburn Panhellenic Council has worked with Lee County's chapter of Habitat for Humanity for over 27 years. The Panhellenic community also participates in Habitat build days that give women hands-on experience building a house for those in need. The community volunteers over 280 hours every year on a job site of a house we help fund. Our annual Greek Sing event, an entertaining dance competition among the sororities donates all proceeds to the Auburn Opelika Habitat for Humanity. Over the years, we have given an estimated \$1,000,000 in donations to Habitat for Humanity. Our previous Director of Greek Sing states, "This year we were able to raise \$170,000 for the Auburn Opelika Chapter of Habitat for Humanity. Greek Sing 2023 was not only an entertaining showcase of so many talented participants, but also an event that will provide a positive impact to the Auburn community for many years to come. We are so thankful for everyone's participation, support, and generosity."

BENEVOLENCE DRIVES

The Auburn Panhellenic Council is committed to bettering Auburn and the local Alabama community through monthly benevolence drives. Last year, we were able to give over 30,000 items to local organizations. Each month, Panhellenic Council's Director of Benevolence researches and organizes donation opportunities within the eastern Alabama community and relays the information to our chapters. Our chapters are provided Panhellenic point opportunities as an incentive to participate and assist in donation efforts. A few of the recent organizations our community has supported include Piedmont Columbus Regional Children's Hospital, Campus Food Pantry, United Way of Lee County, and Our House Auburn. We are so thankful for the opportunity to reach the community beyond Auburn University.



"As Director of Benevolence, nothing is more rewarding than watching over 5,000 Panhellenic women come together to give back to the Auburn Community. Auburn Panhellenic women truly understand the impact that one small donation can make in someone else's life. I have loved watching each member of Panhellenic join as one group and show the love they have for giving back to the community and helping in any way they can."

ADDIE RIVIERE
Director of Benevolence

The EAGLES Program

The iconic eagle represents the Auburn spirit and the strength that is within all of us. It is fitting that Auburn University's comprehensive transition program for students with an intellectual disability is known as EAGLES, or Education to Accomplish Growth in Life Experiences for Success. This program focuses on increasing students' independence, improving leadership and advocacy skills and preparing for employment while providing life skills, academic enrichment, a health and wellness component, and campus navigation supports. The Panhellenic Council and the EAGLES program have worked together to create a recruitment experience for the female participants in the EAGLES program. This partnership provides certain accommodations to Panhellenic policies and procedures to provide a quality and genuine experience for EAGLES participants. Other than these accommodations (e.g., a reduced schedule) the EAGLES women will fully participate in recruitment and if they choose to join a Panhellenic sorority, they will have the unique benefits of membership.

"It has been the greatest honor to be this year's Director of EAGLES Initiatives. Not only has the position opened multiple leadership roles, but it has paved the way for deeper friendships. Daily, I am shown what true intentionality and joy look like through the EAGLES students and reminded that there is profound beauty in our differences. War Eagle!"

KENDALL MCCALLUM
Director of EAGLES Initiatives



Pi Chis

Recruitment can be an exciting, hectic, and often emotional time. You will be part of a small group of potential members sharing a Pi Chi who will help you through the entire process and after. The term Pi Chi stands for Panhellenic Counselor. She is prepared to help you and can answer any questions you may have about recruitment. Your Pi Chi participated in recruitment as a potential member and as a sorority member, so she is familiar with both sides of the recruitment process.

The Pi Chis are working for the Panhellenic Council, and each has promised not to reveal her sorority affiliation. Therefore, she can give you unbiased advice and reduce any pressure you may feel. Although it is sometimes tempting to know what sorority she belongs to, please do not ask her to tell you or make any efforts to find out. She will reveal her sorority to you before bids are distributed.

Your Pi Chi is a resource for you. More importantly, though, she is an impartial listener. She will be your friend who will share in your joys as well as your anxieties. While you will have a special relationship with your own Pi Chi, all Pi Chis are there to help all potential members, so you should feel comfortable approaching any Pi Chi for anything you might need. They will be prepared to help you with anything! Your Pi Chi and your recruitment group will help make your recruitment experience even more exciting and enjoyable.



MEET THE WOMEN IN CHARGE!
(L-R) Pressley Rains, Lydia Wiedetz, Ally Axford

Executive Board

The Panhellenic Executive Board is responsible for overseeing and coordinating all facets of the Panhellenic Council. Programming, finances, chapter relations, and outreach all fall under their leadership, as does recruitment. These six women have been planning for recruitment, establishing plans and guidelines, refining details, and preparing our chapters to welcome you to our community. They are disaffiliated from their sororities for recruitment to provide you with the best support possible. The Panhellenic Executive Board will be running recruitment from behind-the-scenes and ensuring your experience is reflective of all that Auburn Panhellenic stands for.



AMANDA BARKLEY
Panhellenic President



AMY BEVERSLUIS
Administrative Vice President



MADELINE LEWIS
Vice President for Recruitment



CLAIRE CHRISTIE
Executive Vice President



CAMI ENGELBERT
Vice President for Finance



LAURIE WAKEFIELD
Vice President for Public Relations

Recruitment Executive Board

Along with the Panhellenic executive officers, the Recruitment Executive Board has been working hard to prepare for this year's recruitment. They have disaffiliated from their sororities until bids are distributed. Throughout the week, they will be working hard to make things run smoothly and will be available to answer any of your questions. There are 9 women on Panhellenic Cabinet who, along with the 6 members of the Panhellenic executive board, serve on the Recruitment Executive Board.



TOP ROW L-R

- LYDIA WIEDETZ**, *Head Pi Chi*
- ALLY AXFORD**, *Assistant Head Pi Chi*
- PRESSLEY RAINS**, *Assistant Head Pi Chi*
- CAROLINE ROMEO**, *Head Computer Analyst*
- ADDISON MOORE**, *Assistant Computer Analyst*

BOTTOM ROW L-R

- ALEX MORGAN**, *Director of Recruitment Media*
- NICOLE GARRETT**, *Director of Continuous Open Bidding*
- KENDALL MCCALLUM**, *Director of EAGLES Initiatives*
- MARY-COKER GREEN**, *Director of Recruitment Operations*

Why join?

ACADEMICS

We realize you are at Auburn to learn, and each Panhellenic sorority places a high emphasis on academics. Our grade point average is consistently higher than the average Auburn undergraduate women's GPA and this past spring, our GPA was a 3.49.

NETWORKING

Joining a sorority means having the chance to network with fellow sorority members, as well as alumnae. Our members have the support and mentorship for possible job opportunities right after college and beyond.

INVOLVEMENT

All of our sororities encourage their members to get involved in activities they are passionate about. This is why you will see many of our Panhellenic members as leaders in other organizations.

PHILANTHROPY

We have dedicated over 120,000 hours to community service annually as well as donated over \$900,000 to a variety of philanthropic efforts and charities.

SISTERHOOD

Sisterhood is the ability to build community. The bonds that are formed are meant to last a lifetime. Our sisterhood becomes a home away from home for our members.

Life as a first-year member

The new member period will be one of orientation into sorority life. During the semester the new member may receive a "big sister" to help with anything she may need. She will be expected to attend weekly new member meetings. Other fun events such as socials, sisterhood events, swaps, and formals will become a part of her life.

Before a new member can be initiated, she must fulfill the sorority's new member requirements, such as learning the sorority's history, purposes, and goals, and in some cases, obtaining a specific GPA.

A new member is expected to contribute her time and talents to making her chapter a success. She will represent her sorority to other people and is expected to maintain its standards.



Testimonies

“Auburn Panhellenic has helped shape my college experience in such joyful ways. I am able to interact with **EXCEPTIONAL WOMEN**, both in my own chapter as well as the 17 other chapters on campus. I have been able to help and interact with my community through philanthropic events I wouldn’t be able to without the Panhellenic community.”

“Being a member of the Panhellenic community is **ONE OF THE BEST DECISIONS I MADE WHEN I CAME TO AUBURN**. I have truly made the best, most genuine friendships within my chapter. I know that these friendships won’t just last throughout college, but will remain a lifetime.”

“Looking back to my freshman year, I had no idea the experiences that the Panhellenic community would have throughout my college career. Following recruitment, I quickly made friends not just in my own chapter, but in many others as well. **LEADERSHIP EXPERIENCES** in both my personal chapter and within the Panhellenic Council shaped and challenged my years and grew me personally and professionally. I am so fortunate for every woman and encounter that made my time at Auburn far exceed every expectation.”

“When I went through recruitment, I wanted to find a chapter that would give me my **FOREVER FRIENDS**. Thankfully, I have met the most genuine and loving girls who are now my friends for life. I am so grateful I decided to go through recruitment and join the Panhellenic community. It has been one of the most rewarding experiences during my time at Auburn!”

“While going through recruitment, my goal was to find a sisterhood where I would feel welcome as soon as I walked into the doors. When I joined my chapter at Auburn, **I INSTANTLY FELT THE LOVE AND SUPPORT** of all of my sisters. Growing up as an only child, I was so grateful to finally have sisters who encouraged me to be the best version of myself. I am so thankful for the genuine friendships that have made me into the woman that I am today.”

“I came into recruitment only knowing a few girls going to Auburn. I knew I would find friends through my chapter but what I didn’t expect was to find **SISTERS, ROOMMATES, OPPORTUNITIES, AND MEMORIES** that have defined my college experience. I have found the most supportive and genuine girls through Auburn Panhellenic, and I couldn’t be more grateful!”

“I enjoyed being in a sorority at Auburn because you get to be a part of a community of women who share similar values and interests. You have a **SUPPORT SYSTEM OF SISTERS** who encourage you to be your best self and help you through tough times. You also get to participate in fun events and philanthropic activities that make a positive impact on your campus and community. Being in a sorority gives you a sense of belonging and helps you create lifelong friendships.”

“As an out of state student, I was very nervous about such a large transition in my life. Becoming a part of the Panhellenic community was **ONE OF THE GREATEST DECISIONS I HAVE MADE** during my time at Auburn. From my very first day of recruitment as a PNM to my senior year, I have never felt more supported by group of women. It has opened my eyes to such a bigger community, and I am beyond thankful for that. I love seeing how recruitment is able to bring so many unique people together!”

“Coming from out-of-state, I was nervous but so excited for my four years at Auburn. Joining Panhellenic gave me **OPPORTUNITIES** at Auburn I never thought I would have. I met my best friends, made the best memories, and have felt love from each of the 18 chapters starting day one of recruitment.”

“Auburn Panhellenic has been one of the biggest blessings of my Auburn experience. I did not know anyone when I first came to Auburn and feared the feeling of loneliness would be present throughout my first year. However, the first day I met my Pi Chi made me feel like being in a new place wasn’t as scary. The relationships I have formed both inside and outside of my chapter have developed into **LIFE-CHANGING FRIENDSHIPS** that I wouldn’t trade. The women in the Panhellenic community changed me in so many ways and I could not be more thankful.

“Becoming a Panhellenic woman is one of the best decisions I have made at Auburn. Because of this sisterhood, **ENDLESS DOORS HAVE OPENED** for lifelong friendships, leadership opportunities, and unforgettable memories. I am forever grateful for the opportunity to be part of this community.”

“Auburn Panhellenic has given me the opportunity for **TRUE FRIENDSHIPS, PERSONAL GROWTH, AND LEADERSHIP DEVELOPMENT**. The memories made during my time have been some of the best and have refined me into the woman I am. There aren’t words to describe how thankful I am for this community.”

RECRUITMENT 101



“Auburn Panhellenic is a community truly unlike any other. It challenges women to fearlessly pursue their goals and to love others fiercely. As the delegate for my sorority, I represent my chapter and encourage women in my chapter to support other sororities philanthropies. Auburn Panhellenic has taught me how to lead and use my influence for good. Joining this community has been one of the best decisions I have made during my college career.”

MARIE HILLIARD
MEMBER OF KAPPA ALPHA THETA

What to Bring & General Tips

WHAT TO BRING:

- A bag or tote to carry your things. Don't worry, the Pi Chis will watch your belongings while you are at parties.
- Pens or pencils, bandages for blisters, mints, extra lip balm, powder, handheld fan, deodorant, and anything you would need to freshen up between parties.
- Snacks such as trail mix, fruit, or crackers and water. Panhellenic will also have water available.
- A small amount of cash or your Tiger Card on hand for each day. There will be food available at campus eateries during your breaks, or you may choose to grab something off campus.
- An umbrella or rain jacket (rainstorms are inevitable in Alabama, especially in August!) and comfortable shoes to change into if you decide to wear heels during parties.

GENERAL TIPS:

- Be yourself and have fun!
- Be positive and smile. Your positivity will radiate to those around you while you are waiting to enter each party.
- Be interested, regardless of whether you like the sorority or not. You will be remembered, and you may decide you really like that sorority if and when you go to another party there.
- Talk to your Pi Chi. She is there to help you make the right decision for you. If you need to talk about which sororities you like/dislike, that is your Pi Chi's job.
- Be mature in your decision-making. Be realistic about which members you feel most comfortable with.



Recruitment Rules

For the fairness of everyone involved, these rules will be strictly enforced. Intentional violations of these rules can result in the violator's release from recruitment. If you are not clear about what you are allowed to do, please do not hesitate to call and ask us. If you think someone may have contacted you inappropriately, please call Greek Life at 334-844-4600.

PRIMARY RECRUITMENT

1. Positive Panhellenic Contact will begin with the start of fall sorority recruitment workshops and continue, except for scheduled parties, until the potential members receive bids. Positive Panhellenic Contact prohibits any oral or written communication. Members may not contact or be contacted by potential members or Pi Chis.
2. Potential members not living in residence halls must abide by the same rules and regulations as those living on campus.
3. Potential members must attend all meetings with their Pi Chis.
4. Potential members must attend the maximum number of parties assigned for each day. If any conflicts arise, notify a Pi Chi immediately.
5. To withdraw from recruitment, a potential member must complete a formal withdrawal form within one hour of receiving her party invitations or within one hour after the last scheduled party of the day.
6. Each potential member must, without talking to anyone, proceed to the place where she will be making her preferences immediately after the last preferential party. Members may not contact or be contacted by potential members or Pi Chis.



Ice Water Teas

WHAT TO WEAR: You should wear a cute and casual outfit. Athleisure will be great. It is important to be comfortable and feel your best during this round. You want to be in the right mindset while watching videos to get to know each chapter!




Visit us on Pinterest,
[@AubPanhellenic](#)
for outfit inspiration.



WHAT TO EXPECT: Each chapter has worked hard to prepare a video for you to watch for Ice Water Tea Round this year, and you will watch these videos with your Pi Chi group. The purpose of these videos is to give you an introduction to each sorority in the Panhellenic community. During this round, you will watch a video prepared by each chapter that showcases their mission and values.

HAVING TROUBLE DECIDING WHICH CHAPTERS YOU WOULD MOST LIKE TO JOIN?

Ask yourself these things after Ice Water Teas to help you make your decisions.

- 1 Which sororities' mission and values seem to align with yours the most?
- 2 After watching these videos, write down a set of qualities you have that you could see yourself bringing to that sorority.
- 3 It is possible that you will not receive every invitation back you desire. Take this time to focus on the basics of each sorority. How do you feel about each of the 18 based on what you learned in this round? Write down your emotions for each chapter, as well as your attitude after watching

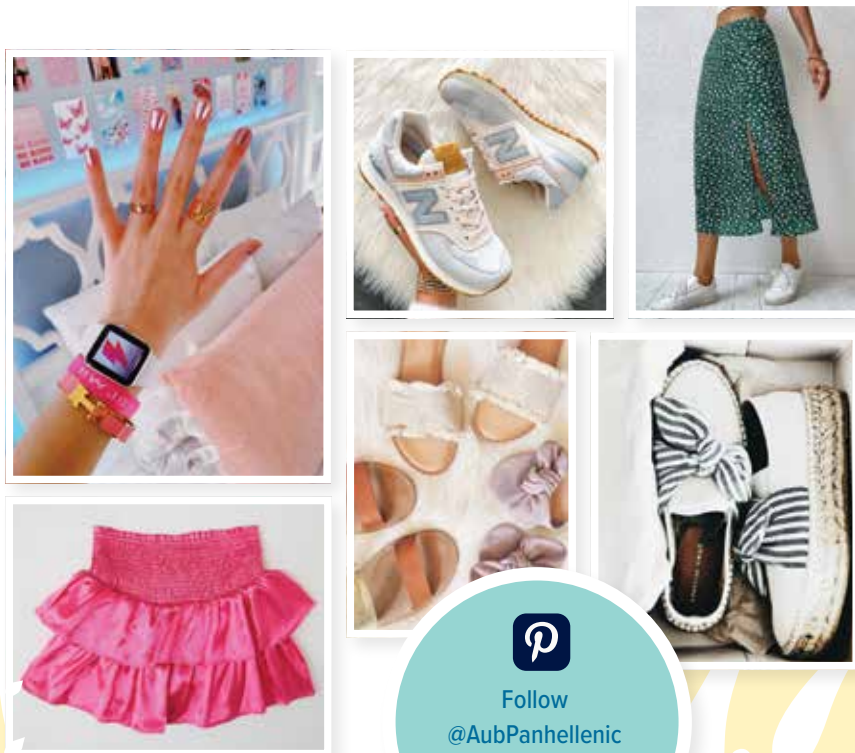


Philanthropy Round

WHAT TO WEAR: To add to the fun of these days, you will be casual and comfortable. You may wear structured shorts and skirts along with the shirt provided to you.

WHAT TO TALK ABOUT: Philanthropy Round is a time to talk about service and giving to others. Ask your hostess about other projects that the sorority participates in throughout the year. This is also a good time to ask questions about anything that you did not get a chance to learn about during Ice Water Teas. These days are a fun chance to ask more in-depth questions with the sorority women while you work to help others.

WHAT TO EXPECT: Panhellenic is proud to have philanthropy as an Auburn tradition. Community service is an important aspect of each sorority and Panhellenic as a whole. Therefore, this round is an important part of recruitment. During this round, you may visit up to 13 sororities and you will learn more about the sorority and the philanthropy that they are passionate about.



ASK YOURSELF THESE QUESTIONS AFTER THE PHILANTHROPY ROUND TO HELP YOU MAKE YOUR DECISIONS.

- 1 List the skills and abilities you have that you would like to share with a sorority. In which chapters do you think these could be utilized?
- 2 What are your feelings about each chapter you visit? Take a minute to write down two positives and one negative of each chapter.
- 3 It is possible that you will not receive every invitation back you desire. Take this time to focus on the basics of each sorority. How do you feel about each sorority you visited based on what you learned in this round? Write down your emotions for each chapter. If you don't receive every invitation you want, discuss this possibility with your Pi Chi.



Sisterhood Round

WHAT TO WEAR: A dress suitable for a nice dinner is recommended. Most women dress up a little more in this round.

WHAT TO TALK ABOUT: This round is a special time to communicate. Conversation is longer, more meaningful, and more in-depth. You should be looking for certain attributes you want in your sorority and your sorority sisters. Scholarship, sincerity, friendliness, and adaptability are all strong attributes that are emphasized in this round. Since this day is a chance for the sororities to boast about themselves and their accomplishments, listen carefully to decide if the achievements and activities they speak of are also important aspects of your college experience.

WHAT TO EXPECT: This round is a fun chance to learn more about the sororities' personalities and the sisterhood in each chapter. You may visit up to eight sororities on this day. These parties are 45 minutes long and you will learn more about what each sororities' sisterhood means to them.



ASK YOURSELF THESE QUESTIONS AFTER THE SISTERHOOD ROUND TO HELP YOU MAKE YOUR DECISIONS.

1

Make a list of the qualities you admire in your closest friends. Now, list the chapters you visited today. Based on your visit, which chapters exhibited some of the qualities of your friends?

2

Which chapters stood out the most to you today?

3

It is possible that you will not receive every invitation back you desire. Take this time to focus on the basics of each sorority. How do you feel about each sorority you visited based on what you learned in this round? Write down your emotions for each chapter. If you don't receive every invitation you want, discuss this possibility with your Pi Chi.

Preference Round

WHAT TO WEAR: This is the dressiest round. A dress, pantsuit, or jumpsuit you might wear to a wedding reception will be appropriate. If you are comfortable in heels, this is a good day to wear them. Many people believe that black dresses are required, but that is not true. Please wear a color you feel most confident in!

WHAT TO TALK ABOUT: Your hostess may talk privately with you about your feelings for her sorority and answer any final questions you have. During this time, you should listen carefully to what the women tell you about their sisterhood. Listen to what they say. These women are revealing to you the character of their sorority. These women want you to know what their sorority means to them and what it could mean to you.

WHAT TO EXPECT: Preference Day is the most serious day of recruitment. You may visit two sororities for 50 minutes each. At each sorority, you may be greeted by one member who previously talked to you. This round can be the most emotional step of the sorority recruitment process, because it is during preference round that you must decide which sorority you would like to join. The parties are usually serious and subdued. The most important thing to do is to be sure you base your decision on your own feelings.




Follow
@AubPanhellenic
for outfit
inspiration!

YOUR RECRUITMENT WEEK IS ENDING, and you have one last round of decisions to make. List each sorority you visited for preference. Read each statement below as it relates to each sorority and decide whether your response to that statement would be “yes,” “no” or “not sure.”

1. I would be happy to participate in this chapter’s philanthropy because it is interesting to me.
2. I would be happy to participate in this chapter’s activities on campus.
3. This sorority seems genuinely interested in having me as a member.
4. This sorority seems open to listening to the ideas of its members and willing to discuss important issues.
5. This sorority has members that share my recreational and leisure interests.
6. This sorority has members with the same academic interests as me and would help me keep up with my studies.
7. The amount of time that I would be required to spend participating in chapter activities is reasonable.
8. This sorority has an environment that I believe will encourage me to develop my talents as well as my new skills.
9. I feel comfortable talking with the members of this sorority about things that are important to me.
10. This sorority seems like a group that would support me as I progress through college.
11. I can be myself when I am with the members of this sorority.
12. The members of this sorority seem to like one another, and I think I would fit in well there.
13. Being a member of this sorority can positively contribute to my college experience.
14. I have qualities that would make me an asset to the sorority.
15. At this point, I think I would like to be a member of this sorority.

IF YOU ANSWERED “YES” to almost all of the statements about a particular sorority, it is likely that you are thinking seriously about the sorority. Your feelings about that sorority are positive, and it is likely that you would thoroughly enjoy being a lifetime member of that sorority.

IF YOU ANSWERED “NO” to several of the statements about a particular sorority, you might want to give some thought as to whether a long-term membership with that chapter (or any chapter) would be satisfying to you. In general, if your feelings about at least some aspects of the chapter are somewhat negative, this may cause you not to be truly happy as a member there. If you think you want to talk about this with someone, please go to your Pi Chi, or a Recruitment Executive Board member, to discuss your concerns.

IF YOU CHOSE “NOT SURE” as an answer for any sorority, these are things you still need more information on. Use these questions as a guide as you attend the preference party of that sorority.

Bid Day

WHAT TO WEAR: Your new sorority will give you a shirt right away, so wear a shirt or tank top you can layer under a T-shirt. Any shorts/skirts are fine with whatever shoes you want. You will take lots of photos, so remember that as you get ready.

WHO ATTENDS: Bid Day is for the current sorority members to meet and celebrate their new members.

WHAT TO EXPECT: This is the day that invitations to join a sorority are distributed. Those who receive an invitation to join a sorority and accept it will be welcomed with open arms by their new sisters. Bid Day is a dry event, free from alcohol and other illegal substances. You will be expected to go to the chapter room to spend time with your new sisters and become better acquainted with your new member class. Once bids are distributed, Continuous Open Bidding begins.



Continuous Open Bidding

Continuous Open Bidding (COB) is a casual and unstructured way for sororities to add women to their chapters outside of primary recruitment. COB does not operate on a schedule, so some sororities will complete their COB process before another chapter. If you are interested in sorority membership and a chapter invites you to a COB event, you should attend. This can be a great way to try and find a sorority home at Auburn if formal recruitment is not for you. Students who are interested in COB opportunities may fill out an interest form that can be found on the Panhellenic website at aub.ie/aupan.

WHO IS ELIGIBLE TO COB? All women who are full-time Auburn University students are eligible to participate as long as they meet three conditions: (1) they must have never been initiated into a National Panhellenic Conference sorority before, (2) they must not have received a bid during the most recent fall primary recruitment. (3) they must not have accepted a COB bid and later turned it down in the same semester.

COB BY THE NUMBERS? Last year, our community gave around 160 bids through the COB process. This includes the fall and the spring semester.

WHEN IS COB HELD? COB events are held whenever the chapter chooses. They may plan a small dinner with some potential members and a few sisters or watch a sporting event together. The location of the event is not important, if the event is alcohol-free.

WHICH SORORITIES HAVE COB? Some sororities will be eligible but choose not to participate in COB, while others will participate as soon as they have room for one person. Some sororities will have it one year and not the next. If you want to be a sorority member, putting your name in the COB mix is a great way to get involved. If you are only interested in joining one specific sorority, COB might not be for you.

HOW WILL SORORITIES DECIDE WHO TO INVITE? Sororities hear of people who are interested in COB in several different ways. If you participated in recruitment but ended up not joining a sorority, sororities will have your information already on file. Sororities will also poll its members asking for interested individuals. For this reason, it is important that you let your sorority friends know that you would be interested in joining, should the chapter conduct COB. Chapters will also reach out to Greek Life, where we keep a database of COB interest forms. Interested women should complete the interest form so that their information will be on file.



CONTINUOUS OPEN BIDDING

Continuous Open Bidding is commonly referred to as COB. It is a period of informal recruitment that is held throughout fall and spring semesters. COB is a great opportunity to pledge a sorority if you do not join during fall recruitment. However, not every sorority will participate in the COB process.

GUIDELINES FOR CONTINUOUS OPEN BIDDING

1. COB will begin on Bid Day, immediately following bid distribution.
2. Women interested may sign up for COB on Auburn Panhellenic's website after recruitment ends. Women may also stop by the Greek Life office if they have questions about the process.
3. When COB begins, sororities participating may have as many informal meetings as desired at any time during fall or spring semester.
4. During COB, potential members may not attend any type of sorority socials, including formals. The potential member may attend fellowships, dinners, etc., with the sorority.



MORE INFORMATION



“The Auburn Panhellenic community is built with strong, hardworking women who pour their heart into everything they do. Each woman strives for inclusivity and a place where we all can call home. As a delegate, I get to see first-hand the loving community that exists, each chapter supporting another.”

MADISON MCGEORGE
MEMBER OF KAPPA KAPPA GAMMA

Frequently Asked Questions

WHAT IF I WANT TO TURN DOWN A BID I RECEIVE? If you receive a bid and decide not to accept it, you may not participate in recruitment for one calendar year and you may not participate in Continuous Open Bidding. We urge you to think very carefully before turning down a bid. Emotions tend to cloud thinking and judgment. Turning in a bid one week after Bid Day puts you in the same position as if you turned it down immediately.

HOW DO SORORITIES DECIDE WHO TO INVITE BACK? As your schedule of parties shrinks each round, so does the number of women each chapter is allowed to invite back. Every potential member has something to offer a group, but each group must release potential members, just as you may need to release some chapter invitations. Each chapter uses a democratic process, considering the thoughts of each undergraduate member of the chapter. Every sorority has a different way of choosing who to invite, but they all have alumnae advisors present at all meetings to ensure that the policies are correctly followed and fair consideration is given to all potential members.

IF I WITHDRAW FROM RECRUITMENT, CAN I DECIDE TO JOIN LATER? Yes. You can wait until the next year's primary recruitment, or you can try to join through Continuous Open Bidding during the school year. You can express interest by completing the form on our website.

DO I HAVE TO FOLLOW THE SCHEDULE AND ATTEND ALL OF THE PARTIES? Yes, the object of recruitment is to give yourself the information you need about the chapters for you to make the best decision. Therefore, you must accept the maximum number of invitations your schedule can accommodate. If you choose to miss parties, you can be released from recruitment.

IF I GO THROUGH RECRUITMENT, AM I OBLIGATED TO JOIN? No. This is a time to assess whether you wish to join a sorority. Many women participate in recruitment to make friends and to see what the Greek community is all about.

ARE THERE REQUIREMENTS TO PARTICIPATE IN RECRUITMENT? There is no grade requirement to go through recruitment, but many individual sororities have a minimum GPA requirement. GPAs vary from sorority to sorority but begin at about 3.0. Each year, women who have GPAs lower than 3.0 do participate and many receive bids, but it is important to know that your chances of receiving a bid are significantly lessened if your grades are low.

I'M A LEGACY TO A SORORITY. IS THERE ANYTHING I SHOULD KNOW? Each potential member is considered on an individual basis. Legacies are not obligated to join their mother's, sister's or grandmother's sorority, and sororities are not obligated to give bids to legacies. Chapters are looking for more than just a family connection to the group. It is important to do your research about legacy policy for each sorority, as many policies have changed.

A Healthy Recruitment

GET A GOOD NIGHT'S SLEEP

- Lack of sleep has been linked to: irritability, reduced immunity, distractedness, sloppiness, and memory problems. The start times for the morning won't change, but you can choose when you go to bed.
- Stay on top of your game by setting a firm bedtime and sticking to it. You have all year to get acquainted with your roommate.
- If you cannot fall asleep at bedtime, sit quietly and read a paper book, setting the mood for sleep. Do not play on your phone or computer.

STAY HYDRATED

- Our bodies consist of up to 75 percent water, or about 10 to 12 gallons, so replenishing your body's water supply is crucial for its proper function.
- During the hot summer, remember to consume at least nine 8-ounce glasses of water each day (HINT: about four bottles of water).
- Carry your own refillable water bottle with a spout or straw to increase fluid intake.

BALANCE YOUR PLATE

- Confused about what to put on your plate? Try to make sure half of your plate consist of fruits or vegetables. The other half should include protein and whole grains.

EXERCISE IS A PRIORITY

- During recruitment, you are not as active as you feel like you are. Even a short walk around campus can improve your mood and confidence. Be sure to get 20 to 30 minutes of actual exercise each day.
- Exercise boosts your energy levels by improving your cardiovascular health.
- If you exercise during the day, you will have an easier time falling asleep at night.
- Exercising with someone else is a great way to spend time together and build a friendship.

DON'T MISS ANY MEALS

- Skipping meals affects your blood sugar and energy levels making it difficult to focus.
- Missing meals can cause mood swings, fatigue, headaches, and shaking.
- Eat three full meals and snacks. Bring snacks with you to eat between parties. Healthy snacks (carrot sticks, string cheese, apples, etc.) will give you the most energy without crashing later.
- Drink wisely! As a beverage of choice, ask for water, unsweetened tea, and drinks without added sugars.
- Opt for wheat bread for sandwiches. Start your meal with a salad packed with veggies to help control hunger and feel satisfied sooner.
- Choose fish for a healthy dose of good protein and fat that makes your hair, skin, and nails healthy!

"This can be a hard week mentally and physically, so don't forget to check in on how you are feeling. It is important to get enough sleep, eat a balanced meal, and drink lots of water. You may feel many emotions this week, but keep in mind you are not alone. There are many ways to de-stress and when I feel overwhelmed, I enjoy listening to music or journaling. Prioritize what brings you joy, take time to do something that relaxes you, and be where your feet are in each moment. Always try to stay positive and be true to yourself."

MEGHAN WEBSTER
Director of Health and Wellness



Finances

An important thing to consider when deciding to join a sorority should be whether you are able to meet the financial obligations. Both you and your parents should be aware of the fees, dues, and other expenses. Each sorority charges a new member fee when you join. At initiation time, you will be charged an initiation fee. As your membership continues, you will pay regular dues, either monthly or semesterly, throughout your college career. The cost of extras, like T-shirts, pictures, jewelry, and stationery varies with everyone. Although you are not required to purchase any of these things, most women choose to do so. A photographer will be present at most sorority events, and T-shirts and sweatshirts are usually available for events as well. In addition to purchasing shirts for themselves, many women also choose to purchase one for their date. Pictures usually cost about \$2, and shirts can be anywhere from \$10 to \$20.

In order to pay for the non-revenue space in sorority buildings, commonly referred to as chapter rooms, all sorority members are assessed a fee for the use of these facilities. This fee is called the "Panhellenic Facility Fee" and will appear on each student's bursar bill, or e-bill, rather than be paid to the sorority. This fee is \$105 per semester each fall and spring. The Greek Fee of \$15 per semester is paid by every Greek student at Auburn University. This fee goes towards resources, presentations, speakers, and many other services that Greek Life provides for students in fraternities and sororities.

Each sorority has a hall in the Sorority Village that sleeps around 40 people. Sororities strongly encourage their members to live on the hall. The hall is a fun place to live with your best friends. It is centrally located on campus, next to the Neville Arena and Village Dining. It is a short walk to class or Campus Rec.

Bill of Rights

1. The right to be treated as an individual.
2. The right to be fully informed about the recruitment process.
3. The right to ask questions and receive true, objective answers from Pi Chis and sorority members.
4. The right to be treated with respect.
5. The right to be treated as a capable and mature person without being patronized.
6. The right to ask how and why and to receive straightforward answers.
7. The right to have and express opinions to Pi Chis
8. The right to have inviolable confidentiality when sharing information with Pi Chis.
9. The right to make informed choices without undue pressure from others.
10. The right to be fully informed about the binding agreements implicit in preference card signing.
11. The right to make one's own decisions and to accept full responsibility for the results of those decisions.
12. The right to have a positive, safe, and enriching recruitment and pledging experience.
13. Potential New Members are expected to act with respect in all recruitment parties.

AN ESTIMATED AVERAGE OF SORORITY COSTS

FIRST YEAR COSTS

\$1,182 New member dues (first semester only)	\$795 General member dues (per semester)	\$105 Facility fee (per semester)
--	---	--



ALPHA CHI OMEGA

COLORS

Scarlet Red & Olive Green

MASCOT

Lyre

PHILANTHROPY

Domestic Violence Awareness,
Alpha Chi Omega Foundation

TOTAL NEW MEMBER FEES: \$ 1,607

NEW MEMBER DUES: \$909

PLEDGE FEE: \$25

PARLOR FEE: \$23

INITIATION FEE: \$209

BADGE FEE: \$78

TECHNOLOGY FEE: \$18

INTER/NATIONAL FEE: \$120

OTHER OUT OF POCKET EXPENSES (OPTIONAL): \$225

TOTAL MEMBER FEES: \$835

MEMBER DUES: \$449

INTER/NATIONAL FEE: \$120

PARLOR FEE: \$23

TECHNOLOGY FEE: \$18

OTHER OUT OF POCKET EXPENSES (OPTIONAL): \$225



ALPHA DELTA PI

COLORS

Azure Blue & White

MASCOT

Alphie the Lion

PHILANTHROPY

Ronald McDonald House

TOTAL NEW MEMBER FEES: \$882

NEW MEMBER DUES: \$459

PLEDGE FEE: \$108

PARLOR FEE: \$10

INITIATION FEE: \$148

BADGE FEE: \$168

TECHNOLOGY FEE: Included

INTER/NATIONAL FEE: \$111

OTHER OUT OF POCKET EXPENSES (OPTIONAL): \$120

TOTAL MEMBER FEES: \$569

MEMBER DUES: \$459

INTER/NATIONAL FEE: \$10

PARLOR FEE: \$100

TECHNOLOGY FEE: Included

OTHER OUT OF POCKET EXPENSES (OPTIONAL): \$120



ALPHA GAMMA DELTA

COLORS

Red, Buff & Green

MASCOT

Squirrel

PHILANTHROPY

Fighting Hunger

TOTAL NEW MEMBER FEES: \$ 1,437

NEW MEMBER DUES: \$650

PLEDGE FEE: \$165

PARLOR FEE: Included

INITIATION FEE: \$295

BADGE FEE: Varies

TECHNOLOGY FEE: Included

INTER/NATIONAL FEE: Included

OTHER OUT OF POCKET EXPENSES (OPTIONAL): \$325

TOTAL MEMBER FEES: \$975

MEMBER DUES: \$650

INTER/NATIONAL FEE: Included

PARLOR FEE: Included

TECHNOLOGY FEE: Included

OTHER OUT OF POCKET EXPENSES (OPTIONAL): \$325



ALPHA OMICRON PI

COLORS

Cardinal

MASCOT

Panda

PHILANTHROPY

The Arthritis Foundation

TOTAL NEW MEMBER FEES: \$1,454

NEW MEMBER DUES: \$753

PLEDGE FEE: \$51

PARLOR FEE: Included

INITIATION FEE: \$170

BADGE FEE: \$99

TECHNOLOGY FEE: Included

INTER/NATIONAL FEE: \$132

OTHER OUT OF POCKET EXPENSES (OPTIONAL): \$250

TOTAL MEMBER FEES: \$1,118

MEMBER DUES: \$753

INTER/NATIONAL FEE: \$201

PARLOR FEE: Included

TECHNOLOGY FEE: Included

OTHER OUT OF POCKET EXPENSES (OPTIONAL): \$156



ALPHA XI DELTA

COLORS

Light Blue, Dark Blue & Gold

MASCOT

BetXi Bear

PHILANTHROPY

Kindly Hearts Campaign

TOTAL NEW MEMBER FEES: \$1,330

NEW MEMBER DUES: \$320

PLEDGE FEE: \$150

PARLOR FEE: \$75

INITIATION FEE: \$210

BADGE FEE: \$75

TECHNOLOGY FEE: \$12

INTER/NATIONAL FEE: \$113

OTHER OUT OF POCKET EXPENSES (OPTIONAL): \$765*

TOTAL MEMBER FEES: \$1,080

MEMBER DUES: \$380

INTER/NATIONAL FEE: \$113

PARLOR FEE: \$75

TECHNOLOGY FEE: \$12

OTHER OUT OF POCKET EXPENSES (OPTIONAL): \$500



CHI OMEGA

COLORS

Cardinal & Straw

MASCOT

Owl

PHILANTHROPY

Make-a-Wish Foundation

TOTAL NEW MEMBER FEES: \$1,000

NEW MEMBER DUES: \$400

PLEDGE FEE: \$75

PARLOR FEE: \$100

INITIATION FEE: \$125

BADGE FEE: \$200

TECHNOLOGY FEE: Included

INTER/NATIONAL FEE: Included

OTHER OUT OF POCKET EXPENSES (OPTIONAL): \$100

TOTAL MEMBER FEES: \$565

MEMBER DUES: \$400

INTER/NATIONAL FEE: Included
PARLOR FEE: \$100

TECHNOLOGY FEE: Included

OTHER OUT OF POCKET EXPENSES (OPTIONAL): \$65



DELTA DELTA DELTA

COLORS

Silver, Gold & Blue

MASCOT

Dolphin

PHILANTHROPY

Children's Cancer Charities

TOTAL NEW MEMBER FEES: \$1,078

NEW MEMBER DUES: \$768

PLEDGE FEE: \$48

PARLOR FEE: Included

INITIATION FEE: \$157

BADGE FEE: \$105

TECHNOLOGY FEE: Included

INTER/NATIONAL FEE: Included

OTHER OUT OF POCKET EXPENSES (OPTIONAL): \$35

TOTAL MEMBER FEES: \$803

MEMBER DUES: \$768

INTER/NATIONAL FEE: Included

PARLOR FEE: Included

TECHNOLOGY FEE: Included

OTHER OUT OF POCKET EXPENSES (OPTIONAL): \$35



DELTA GAMMA

COLORS

Bronze, Pink & Blue

MASCOT

Anchor

PHILANTHROPY

Delta Gamma Foundation (Service for Sight & Joining Forces)

TOTAL NEW MEMBER FEES: \$1,080

NEW MEMBER DUES: \$1,080

PLEDGE FEE: Included

PARLOR FEE: Included

INITIATION FEE: Included

BADGE FEE: Included

TECHNOLOGY FEE: Included

INTER/NATIONAL FEE: Included

OTHER OUT OF POCKET EXPENSES (OPTIONAL): Optional*

TOTAL MEMBER FEES: \$825

MEMBER DUES: Included

INTER/NATIONAL FEE: Included

PARLOR FEE: Included

TECHNOLOGY FEE: Included

OTHER OUT OF POCKET EXPENSES (OPTIONAL): Optional*



DELTA ZETA

COLORS

Rose & Green

MASCOT

Turtle

PHILANTHROPY

Speech & Hearing, The Painted Turtle, The Starkey Hearing Foundation

TOTAL NEW MEMBER FEES: \$1,143

NEW MEMBER DUES: \$468

PLEDGE FEE: \$90

PARLOR FEE: \$95

INITIATION FEE: \$140

BADGE FEE: \$100

TECHNOLOGY FEE: Included

INTER/NATIONAL FEE: Included

OTHER OUT OF POCKET EXPENSES (OPTIONAL): \$250

TOTAL MEMBER FEES: \$813

MEMBER DUES: \$468

INTER/NATIONAL FEE: Included

PARLOR FEE: \$95

TECHNOLOGY FEE: Included

OTHER OUT OF POCKET EXPENSES (OPTIONAL): \$250



GAMMA PHI BETA

COLORS

Pink & Brown

MASCOT

Crescent Moon

PHILANTHROPY

Building Strong Girls through Girls on the Run

TOTAL NEW MEMBER FEES: \$1,270

NEW MEMBER DUES: \$713.50

PLEDGE FEE: Included

PARLOR FEE: \$179

INITIATION FEE: Included

BADGE FEE: \$100+

TECHNOLOGY FEE: \$22.50

INTER/NATIONAL FEE: \$205

OTHER OUT OF POCKET EXPENSES (OPTIONAL): \$50+

TOTAL MEMBER FEES: \$771

MEMBER DUES: \$538.50

INTER/NATIONAL FEE: \$71

PARLOR FEE: \$89

TECHNOLOGY FEE: \$22.50

OTHER OUT OF POCKET EXPENSES (OPTIONAL): \$50+



KAPPA ALPHA THETA

COLORS

Black & Gold

MASCOT

Kite

PHILANTHROPY

Court Appointed Special Advocates (CASA), Kappa Alpha Theta Foundation, The Friendship Fund

TOTAL NEW MEMBER FEES: \$765

NEW MEMBER DUES: \$550

PLEDGE FEE: \$116

PARLOR FEE: Included

INITIATION FEE: \$180

BADGE FEE: Included

TECHNOLOGY FEE: Included

INTER/NATIONAL FEE: \$121

OTHER OUT OF POCKET EXPENSES (OPTIONAL): \$20

TOTAL MEMBER FEES: \$585

MEMBER DUES: \$550

INTER/NATIONAL FEE: \$121

PARLOR FEE: \$180

TECHNOLOGY FEE: Included

OTHER OUT OF POCKET EXPENSES (OPTIONAL): \$20



KAPPA DELTA

COLORS

Olive Green & Pearl White

MASCOT

Teddy Bear

PHILANTHROPY

Girl Scouts of the USA, Prevent Child Abuse America, Special Deliveries of Lee County

TOTAL NEW MEMBER FEES: \$1,116

NEW MEMBER DUES: \$251

PLEDGE FEE: \$95

PARLOR FEE: \$160

INITIATION FEE: \$257

BADGE FEE: \$60

TECHNOLOGY FEE: Included

INTER/NATIONAL FEE: Included

OTHER OUT OF POCKET EXPENSES (OPTIONAL): \$294

TOTAL MEMBER FEES: \$773

MEMBER DUES: \$428

INTER/NATIONAL FEE: Included

PARLOR FEE: \$50

TECHNOLOGY FEE: Included

OTHER OUT OF POCKET EXPENSES (OPTIONAL): \$296



KAPPA KAPPA GAMMA

COLORS

Light Blue & Dark Blue

MASCOT

Owl

PHILANTHROPY

Reading is Fundamental, Girl's Academy, The Kappa Kappa Gamma Foundation

TOTAL NEW MEMBER FEES: \$972.37

NEW MEMBER DUES: \$444.37

PLEDGE FEE: \$175

PARLOR FEE: \$103

INITIATION FEE: Included

BADGE FEE: \$50

TECHNOLOGY FEE: Included

INTER/NATIONAL FEE: \$250

OTHER OUT OF POCKET EXPENSES (OPTIONAL): \$5

TOTAL MEMBER FEES: \$547.37

MEMBER DUES: \$444.37

INTER/NATIONAL FEE: \$103

PARLOR FEE: Included

TECHNOLOGY FEE: Included

OTHER OUT OF POCKET EXPENSES (OPTIONAL): \$5



PHI MU

COLORS

Rose & White

MASCOT

Lion

PHILANTHROPY

Children's Miracle Network Hospitals

TOTAL NEW MEMBER FEES: \$1,143

NEW MEMBER DUES: \$567

PLEDGE FEE: \$50

PARLOR FEE: \$110

INITIATION FEE: \$153

BADGE FEE: \$92

TECHNOLOGY FEE: \$30

INTER/NATIONAL FEE: \$101

OTHER OUT OF POCKET EXPENSES (OPTIONAL): \$40

TOTAL MEMBER FEES: \$738

MEMBER DUES: \$567

INTER/NATIONAL FEE: \$101

PARLOR FEE: Included

TECHNOLOGY FEE: \$30

OTHER OUT OF POCKET EXPENSES (OPTIONAL): \$40



PI BETA PHI

COLORS

Wine & Silver Blue

MASCOT

Angel

PHILANTHROPY

Read>Lead>Achieve

TOTAL NEW MEMBER FEES: \$814

NEW MEMBER DUES: \$814

PLEDGE FEE: \$35

PARLOR FEE: \$150

INITIATION FEE: \$125

BADGE FEE: \$25

TECHNOLOGY FEE: \$34

INTER/NATIONAL FEE: \$55

OUT OF POCKET: \$100

TOTAL MEMBER FEES: \$673

MEMBER DUES: \$673

INTER/NATIONAL FEE: \$55

PARLOR FEE: \$75

TECHNOLOGY FEE: \$34

OUT OF POCKET: \$100



SIGMA KAPPA

COLORS

Lavender & Maroon

MASCOT

Dove

PHILANTHROPY

Sigma Kappa Foundation, Inherit the Earth, Gerontology Research, Maine Seacoast Mission, Alzheimer's Disease Research

TOTAL NEW MEMBER FEES: \$1,111

NEW MEMBER DUES: \$480

PLEDGE FEE: \$102

PARLOR FEE: \$10

INITIATION FEE: \$182

BADGE FEE: \$65

TECHNOLOGY FEE: \$34

INTER/NATIONAL FEE: \$240

OTHER OUT OF POCKET EXPENSES (OPTIONAL): Optional

TOTAL MEMBER FEES: \$666

MEMBER DUES: \$480

INTER/NATIONAL FEE: \$142

PARLOR FEE: \$10

TECHNOLOGY FEE: \$34

OTHER OUT OF POCKET EXPENSES (OPTIONAL): Optional



SIGMA SIGMA SIGMA

COLORS

Royal Purple & White

MASCOT

Sailboat

PHILANTHROPY

March of Dimes

TOTAL NEW MEMBER FEES: \$1,005.25

NEW MEMBER DUES: \$540.25

PLEDGE FEE: \$230

PARLOR FEE: \$75

INITIATION FEE: Included

BADGE FEE: \$160

TECHNOLOGY FEE: Included

INTER/NATIONAL FEE: Included

OTHER OUT OF POCKET EXPENSES (OPTIONAL): Optional

TOTAL MEMBER FEES: \$845.25

MEMBER DUES: \$540.25

INTER/NATIONAL FEE: \$230

PARLOR FEE: \$75

TECHNOLOGY FEE: Included

OTHER OUT OF POCKET EXPENSES (OPTIONAL): Optional



ZETA TAU ALPHA

COLORS

Turquoise Blue & Steel Grey

MASCOT

Five-pointed crown

PHILANTHROPY

Breast Cancer Education & Awareness Total

TOTAL NEW MEMBER FEES: \$1,119

NEW MEMBER DUES: \$465

PLEDGE FEE: \$100

PARLOR FEE: \$68

INITIATION FEE: \$150

BADGE FEE: \$68

TECHNOLOGY FEE: \$20

INTER/NATIONAL FEE: \$158

OTHER OUT OF POCKET EXPENSES (OPTIONAL): \$90

TOTAL MEMBER FEES: \$801

MEMBER DUES: \$465

INTER/NATIONAL FEE: \$158

PARLOR FEE: \$68

TECHNOLOGY FEE: \$20

OTHER OUT OF POCKET EXPENSES (OPTIONAL): \$90

BEHIND the GLASS



reflect your style

Enjoy **20%** off
your first purchase
with this ad!

  @shopbehindtheglass
btgauburn.com

located in downtown Auburn for 35 years

CLUB  PILATES®

First Time?

Try it **FREE!**

Lock In Your
Free Intro Class
**SCAN
HERE!**



Experience a full-body workout perfect for every fitness level. By incorporating Pilates into your routine, you can increase your strength and energy, improve your physical fitness, posture, and focus. You can enhance your overall well-being and effectively manage the demands that comes with university life.



(334) 414-4548 | clubpilates.com/auburn | 2311 Bent Creek Rd., Ste 600, Auburn, AL 36830

The Gathered Gift

is going GREEK!

Please visit our website at www.thegatheredgift.com starting mid to late June for information on Bid Day Packages, many Greek items, and Daily Happies! Let us love on your daughters for you as they go through Rush!



Follow us on Instagram @thegatheredgift and on Facebook @ The Gathered Gift
245 Solamere Lane, Auburn, Alabama
334-319-0029

BID DAY PACKAGES ACCESSORIES GIFTS & MORE!

Lily Jane
Boutique



SHOP NOW AT
www.lilyjaneboutique.com

334-521-7103

Located In Midtown

1310 Opelika Road Suite B & C, Auburn, AL 36830



WE UNDERSTAND

Leaving home is hard. Finding new sisters is meaningful.

We hope you find your perfect sorority family. If you need more than your sisters' support, we will be here.

Consider a new perspective.

Perspective
COUNSELING
AUBURN

www.perspectivecounselingauburn.com 334-329-6063



says

GO
GREEK!



THE BEST TOTAL BODY BARRE WORKOUT
CROSS TRAIN WITH FOUR CLASS FORMATS

stay strong all semester with our student packages



SCAN QR CODE & GET A FREE CLASS-PROMO CODE "FIRSTFREE"

FOLLOW US ON SOCIAL: [purebarreauburn](https://www.purebarreauburn.com)
| www.purebarre.com/al-auburn |
email: auburn@purebarre.com
call or text: 334.887.0007



STUDENT INVOLVEMENT

Getting involved with a campus organization is a great way to meet others, build your resume and learn skills future employers seek. Whether you are interested in community service, saving the bees, building robots or growing as a leader, Student Involvement has a community for everyone. With more than 350 student-led organizations, we make it easy to discover your path at Auburn.

involvement BRANCHES

- Emerge Leadership Programs
- Student Governance
- Student Media
- Student Organizations
- Student Programming
- Service Programs



AU INVOLVE

Log on to browse all organizations today!
auburn.edu/auinvolve



BECAUSE 'WELCOME TO CAMPUS' SHOULD LAST MORE THAN A WEEK

AUGUST 7 - OCTOBER 1

The First 56, which includes hundreds of events hosted by campus departments and student organizations, offers **eight weeks** of programming designed to help connect you to campus!

A **jump-start** to your Auburn experience, join *The First 56* to meet your peers, learn about available campus resources and **have fun!**

View all events online by visiting:
aub.ie/welcomecalendar



@auinvolve

STUDENT INVOLVEMENT

TANOLOGY

Spray Tan & Beauty Bar

Tanology is Auburn's one stop shop for all things beauty!

Visit us for spray tans, rapid spray tans, lash services, facials, waxing, Sorella Skincare, teeth whitening, and so much more!



TANOLOGYAU.COM

(334) 748-1343

@TANOLOGYAU

OPENING AUGUST 2023

TIGER STRONG NUTRITION

416 Gay Street



**Loaded Tea Bombs
Greek Spirit Wear**

WRAPSODY



BID DAY BOX PREORDER
AUBURNBIDDAY.COM

112 N COLLEGE ST • (334) 887-7447
@SHOPWRAPSODY • WRAPSODYONLINE.COM



RECRUITMENT DINING HOURS

Chick-Fil-A

August 1-4, 7:30 a.m. to 5 p.m.
 August 5, 9 a.m. to 5 p.m.
 August 7-11, 7:30 a.m. to 5 p.m.
 August 12, 9 a.m. to 5 p.m.
 August 14, 7:30 a.m. to 6 p.m.

Blenz

August 7-11, 9 a.m. to 2 p.m.
 August 14, 8 a.m. to 4 p.m.

Saladworks

August 1-4, 10:30 a.m. to 3 p.m.
 August 7-11, 10:30 a.m. to 3 p.m.
 August 14, 10:30 a.m. to 3 p.m.

Starbucks

August 1-4, 7:30 a.m. to 5 p.m.
 August 5-6, 9 a.m. to 5 p.m.
 August 7-11, 7:30 a.m. to 5 p.m.
 August 12-13, 9 a.m. to 5 p.m.
 August 14, 7:30 a.m. to 7 p.m.

Bodda Burger

August 14, 10:30 a.m. to 3 p.m.

War Eagle Supply

Student Center Location
 August 1-4, 7:30 a.m. to 5 p.m.
 August 5-6, 9 a.m. to 5 p.m.
 August 7-11, 7 a.m. to 5 p.m.
 August 12-13, 9 a.m. to 5 p.m.
 August 14, 7 a.m. to 7 p.m.

Village Location

August 1-6, 9 a.m. to 9 p.m.
 August 7-12, 9 a.m. to 9 p.m.
 August 13-14, 9 a.m. to 12 p.m.

Chicken Salad Chick

August 1-4, 10 a.m. to 2 p.m.
 August 7-11, 10 a.m. to 2 p.m.
 August 14, 10 a.m. to 5 p.m.

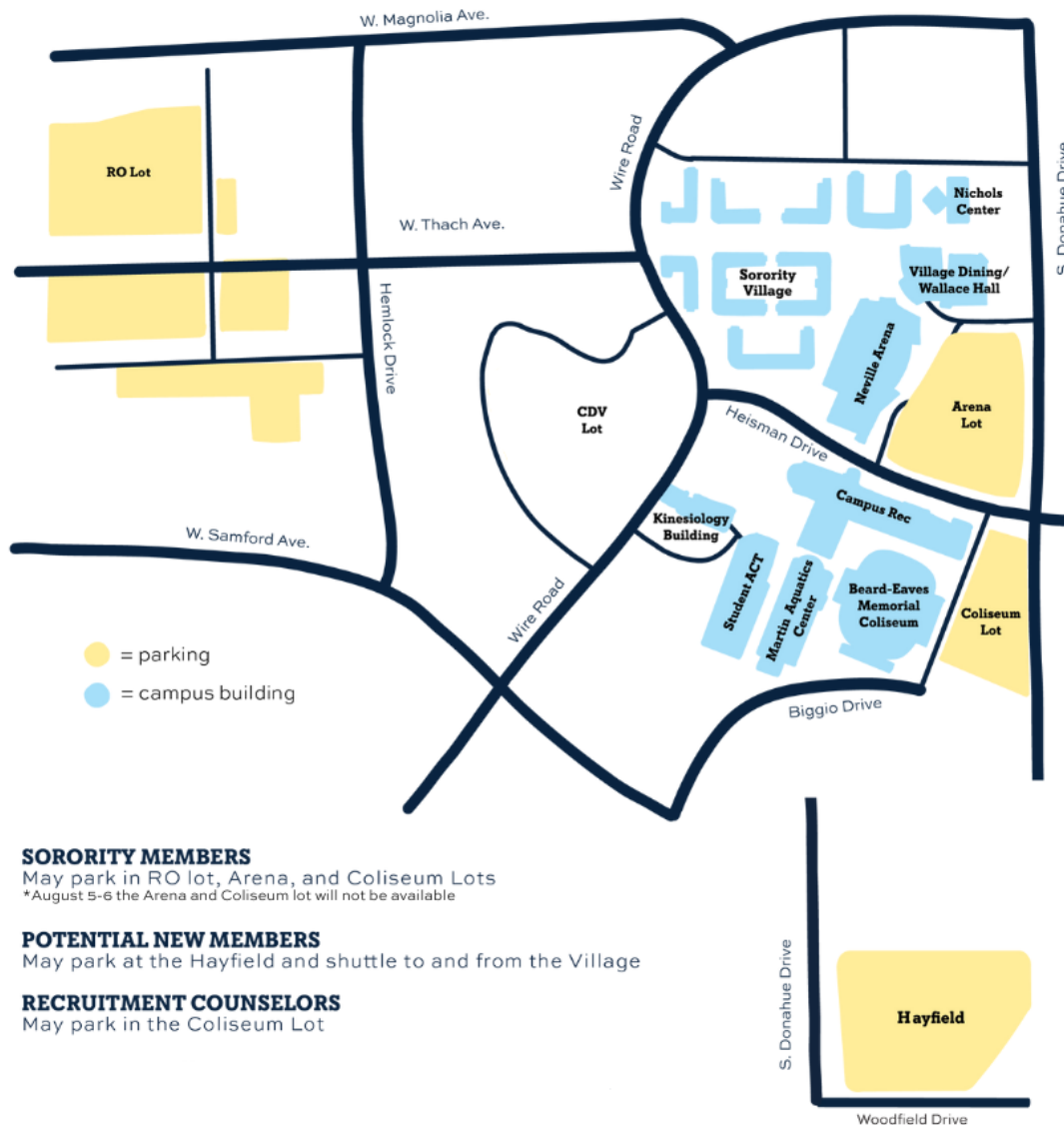
Panera

August 1-4, 7:30 a.m. to 5 p.m.

The Edge

August 1-4, 10:30 a.m. to 1 p.m.
 August 5-6, 10:30 a.m. to 1 p.m. & 5 p.m. to 8 p.m.
 August 7-11, 7 a.m. to 9 p.m.
 August 12-13, 8 a.m. to 9 p.m.
 August 14, 8 a.m. to 10 p.m.

PARKING INFORMATION



SORORITY MEMBERS

May park in RO lot, Arena, and Coliseum Lots
 *August 5-6 the Arena and Coliseum lot will not be available

POTENTIAL NEW MEMBERS

May park at the Hayfield and shuttle to and from the Village

RECRUITMENT COUNSELORS

May park in the Coliseum Lot

DO NOT PARK

- In A or B-zone spaces: Parking services will be monitoring all lots, and cars parked illegally will be ticketed or towed.
- Along any streets: Unless there are clearly marked C-zone spots (there are very few), don't park on the street.
- At the Auburn Medical Clinic: Those spaces are for people sick enough to need a doctor's visit. Please do not inconvenience them. That lot will be monitored and anyone parking there for any reason other than a doctor's visit will be towed.
- At fraternity houses: There are a few fraternity houses near the Village, but they are not for public parking.
- In the lots adjacent to the Village: Unless you have a pass to park there, those lots are off limits.
- On the grass: If you are running late, you might be tempted to leave your car on a curb or on a grassy area. If you leave your car somewhere that is not a clearly marked space, do not expect it to be there when you come back.
- At the Village residence halls: There are about 30 spaces that are next to the Village residence halls. Those are used as 15-minute parking by sorority officers and not for potential members.
- Any place you are not positive about: If a parking space seems too good to be true, it probably is. Rather than trolling for the closest place, be early and park in designated lots.

CAMPUS RESIDENTS

- If you are living on campus, please follow the parking instructions that you were provided to you with your move-in information.

OFF-CAMPUS RESIDENTS

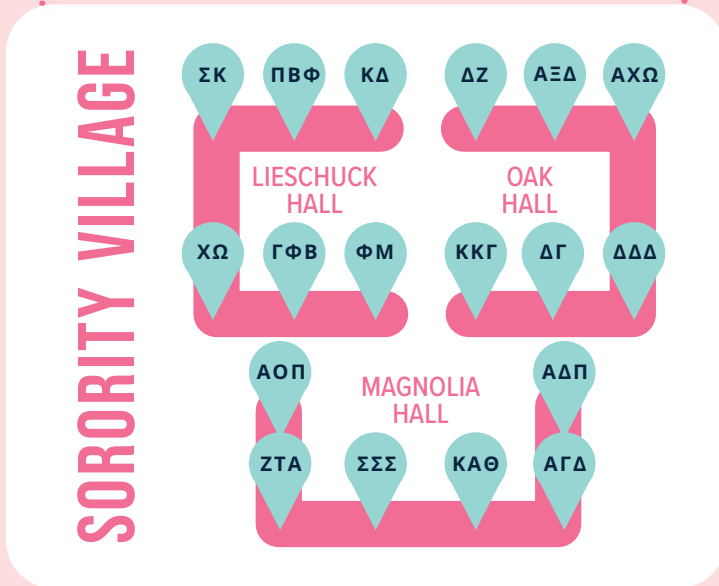
- Off-campus residents should park in the Hayfield on South Donahue across from the Nursing building. Please don't park in C-zone lots near the Coliseum or the Arena. Those lots will be used by the sorority members who will arrive hours before you do.

BID DAY PARKING

- The best places to park will be the Magnolia Parking Deck and West 1 and 2 parking lots. People should still not park in handicapped spots or anywhere that is not an actual parking space. The best places to park on this day will be the RO lot at the end of West Thach.

WHEEL LOCK & TOWS

- If you park in an unauthorized zone, you risk getting a wheel lock, or your car towed. If you need to pick up your vehicle, you may do so Monday-Friday from 7:15 a.m. until 4:15 p.m. Please call 334-844-4143 or stop by the parking services office located at 330 Lem Morrison Dr.; If you need your vehicle released after hours, you have until 10 p.m. to do so and you need to call 334-740-2077. The cost of removing the wheel lock or retrieving your vehicle from the impound lot is \$100.



GREEK LIFE